

NASA: Nemesis, the Second Sun

By Josef Kemény 21/12/2021



Global climate change and global natural catastrophes are natural. At the core is Nemesis, the second sun in our solar system. This was confirmed by NASA in 2016. In 2007, the American scientific organisation **NOAA**, confirmed almost the same issue: the return of Nemesis, but NOAA calls Nemesis a 'dark star'.

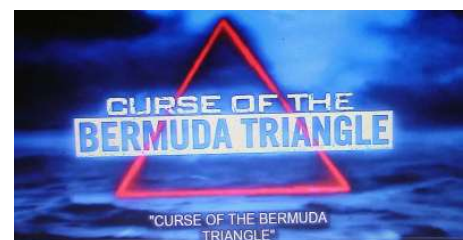
More info at **Industry**, **NOAA**, **Dark Star and Global Warming**, page 38.

The Earth's magnetic field is gradually getting weaker. Because neutron star Nemesis' magnetic field is much stronger than those of the Sun and the Earth, the Earth is heated by, among other sources, the rays of the Sun. NASA also points out the Earth's magnetic field.

The Earth's magnetic field also affects the Bermuda triangle. There are special messages surrounding the Bermuda triangle, multiple messages providing evidence about the triangle as we know it. More info at **Industry**, **Conquering Space IV, Final Times and Goal**, pages 241-264. **The Curse of the Bermuda Triangle**, and pages 4 - 17 below, on **In Search of The Bermuda Triangle**.

The Earth's black hole. Project "Ancient Aliens" deals, among other issues, with the Earth's black hole and the Bermuda triangle. A very interesting and unique project, in which the team tries to get as close to reality as possible.

"Ancient Aliens", **In Search of The Bermuda Triangle** and **The Curse of the Bermuda Triangle** complement each other in this context. Now, at The End of Time, we need proof and without proof the issue is not acceptable. This also concerns global warming, climate change and global natural catastrophes.



Each project necessitates a high level of knowledge and common coherent thoughts connected to project content. In other words: The history of the Earth connected to UFO and extra-terrestrials.

NASA: Nemesis, the Second Sun

2016



Nostradamus - Quatrains

Century 2, Quatrain 41

The great star will burn for seven days,

The cloud will cause **two suns** to appear:

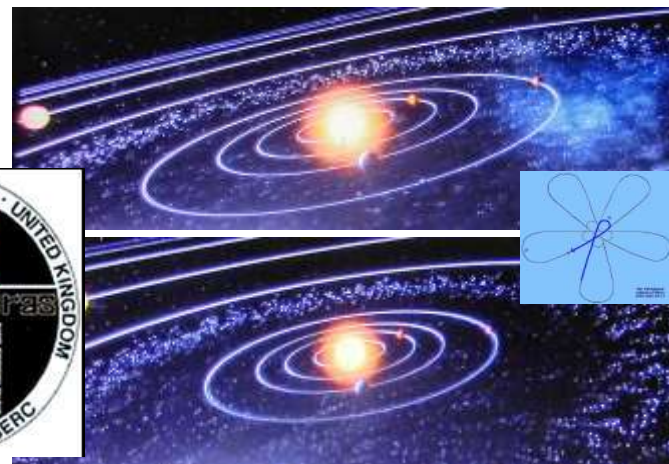
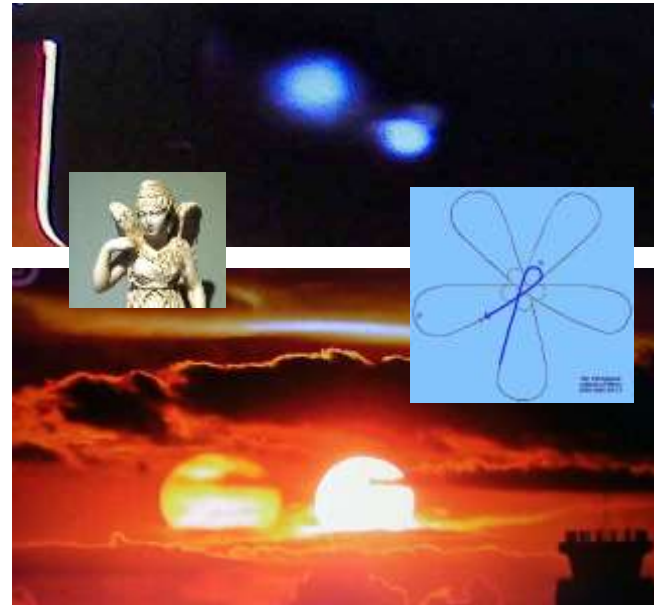
The big mastiff will howl all night

When the great pontiff will change country.

We often say that history repeats itself. Nemesis is back again after around 3 666 years, on December 4, 2015. When the winter sun sets at the city of Tarakan in north Indonesia, a photographer takes this incredible picture. Now, NASA has confirmed the return of Nemesis.

The picture shows two different suns at the horizon. This completes Nostradamus' prophecy. The picture becomes viral. The name 'Nemesis' comes from Greek mythology, the Goddess of revenge, the religious Serpent Goddess, but also a neutron star. NASA calls it a devastating force. NASA says this about the double sun: 'Our own gives life to almost everything on our Earth. But the other star only causes death. A neutron star is dead. It is like a time bomb in the Universe. More info at *Industry, Deity*, pp 28 – 29, *The Arrival of the Neutron Star*, pp 1 – 2, *The Neutron Star is Here*, pp 1 – 10, *The Maya Calendar and Omega*, pp 1 – 12 and *The Sun at a Disadvantage*, pp 1 - 3.

Around 7,000 years ago, the history of Nemesis started to become known from SUMER. At that time the star was called AN, later on Aton the Sun, and now, at the End of Time, Nemesis.



Neutron star Nemesis causes global warming and almost all natural catastrophes: earthquakes, floods, hurricanes, volcanic eruptions, drought, the aftermath of global climate change. The Earth will also be hit by an asteroid.

When Nemesis leaves the asteroid field, it will attract lots of asteroids as a tail.

NASA's own outline of Nemesis' orbit in our solar system. This is called a binary star system.

Nemesis was discovered by NASA, Great Britain and Holland in 1983.

NASA: The Earth's magnetic field is getting weaker



The Earth's magnetic field is created by its core of fused iron. It reaches far into space and protects us from the Sun and dangerous cosmic radiation.

The Earth's magnetic field gradually decreases after 1983, when Nemesis was discovered. Nemesis' magnetic field is much more powerful than that of the Sun and the Earth. The magnetic field cannot fight the powerful radiation from the Sun, the closer Nemesis comes, the more the temperature rises.

A weak magnetic field causes a potential apocalyptic event called 'geomagnetic reversal'. The magnetic field is further weakened by the regrouping of the iron atoms inside the outer core. This leads to polarity reversal, the Earth's core adapts to Nemesis' magnetic core. The geographic poles always point in the same direction, but the magnetic poles move. When the poles reverse, the Earth's magnetic field decreases, which is bad for us. If a reversion occurs, which is probable, it is also a bad thing. Space radiation would damage our satellites and all life on our globe would be affected.

The total mass of our atmosphere can also decrease due to lack of a magnetic field. It is now evident that the Earth's magnetic field is getting weaker and global warming is increasing.

NASA. How do we protect ourselves? Will we survive? We do not know. The world should be aware of the fact that climate change is a complex science and has nothing to do with CO₂ emissions.



CO₂



Nostradamus - Quatrains
Century 2, Quatrain 41
The great star will burn for seven days,
The cloud will cause **two suns** to appear:
The big mastiff will howl all night
When the great pontiff will change country.

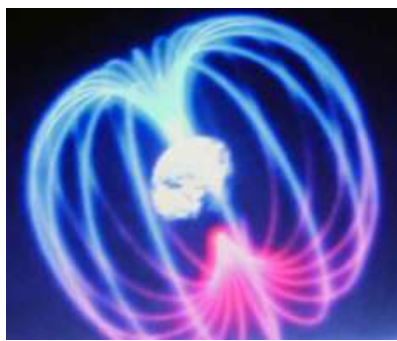


The Gospels state very distinctly that at the End of Time, fake prophets will deceive the people. Greta Thunberg is one of them. She tries to create global climate chaos globally. She does not know what she is doing, and she has no knowledge of global climate science. Neither have her followers.

NASA scientists have since 2000 tried to find out why our planet's axis of rotation is changing. This may cause weather chaos, such as global warming. The rotation and climate chaos are here. Neutron star Nemesis is on its way.

IN SEARCH OF

THE BERMUDA TRIANGLE



The Earth's Magnetic Field



The world's most notorious sea region has been called *Triangle of Death* – or *Hurricane Alley*. But most people know the region under the name *The Bermuda Triangle*, 1.3 million km² of the Atlantic Ocean which has frightened and puzzled travellers, explorers and scientists during centuries. I refer readers to *In Search of The Bermuda Triangle*, a unique project which in a way connects to the Earth's magnetic field.



Zachary Quinto



Zachary Quinto

In 2019, Zachary Quinto, ISBT, and his team, introduced the solution of the Bermuda Triangle riddle. A brief review follows below.



Philippe Max Rouja Custodian of Historic Wrecks Bermuda



Philippe Max Rouja a custodian of historic wrecks in the Bermudas area. He believes he has found one of the causes for the Bermuda devastation, he is very familiar with the devastating forces of the Bermuda Triangle. He has studied the wrecks here for 15 years. Today he introduces a new theory, a unique submarine phenomenon which may have immersed ships here. 'We have entered a large area of Sargassum', he says. In former times ships could get stuck in Sargassum for weeks.



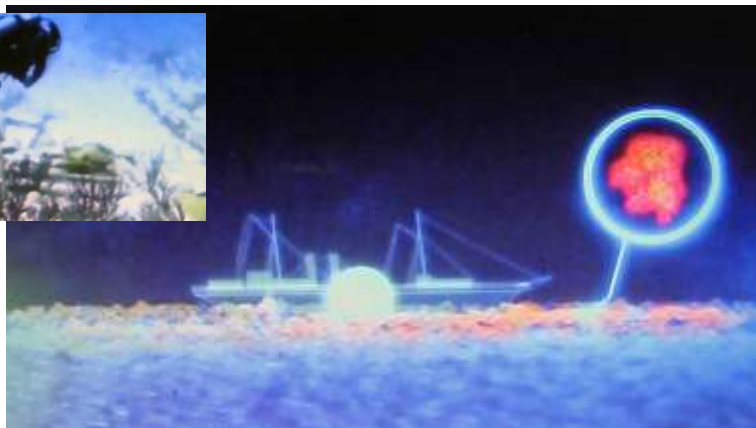
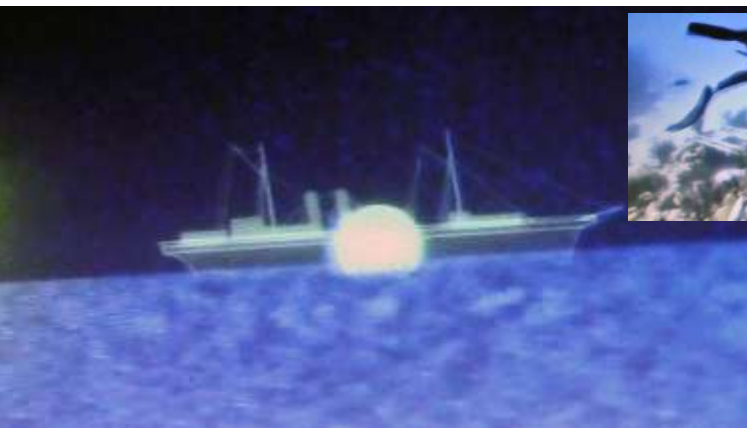
Seafarers told stories about the impenetrable region where many vessels disappeared. The area was named the Sargasso Sea. The thick Sargassum carpets can be as long as many kilometres one of the most dangerous areas of the Triangle. We know that many ships were caught in enormous areas of Sargassum. They can cover 1 – 2 km² and be very thick. Sargassum not only captures ships. Once stuck, something even more dangerous can happen: Sargassum can start to rot and emit poisonous gas. There is a connected story. During the last five years, similar algae have reached southern Caribbean Ocean. The carpets are enormous, wide and thick enough to totally obstruct bays. Shores are destroyed by the gases from rotting algae. This makes us understand that ships could get stuck. The carpets were thick heavy enough to stop vessels for days. If the odours reached the seafarers, they could go mad. Has this mysterious algae poisoned seafarers and immersed during centuries? There is proof nearby.



Philippe has listed three wrecks together in a group. Where else can you see wrecks from different eras at the same spot? There is no logical reason for their location. They are different – but met the same fate, some decades apart.



Blockade runner **Montana** sank in 1863. One of the blade wheels can be seen at the stern.



Montana's steam-powered blade wheels were state of the art in those days, but probably apt to get stuck in the Sargassum. And, as you can see, the Montana is not the only vessel here.



When you swim past the mid-section you can see cargo from a ship that perished in 1943, the **Constellation**. Constellation was a luxurious cargo vessel transporting exclusive goods to Venezuela. On board were cement, pool tables and plain glass for windows. But the cargo never reached its destination.



The **Lartington** perished during a voyage to Russia in 1979. All wrecks are mysteries until you know what happened. That many wrecks in the Bermuda area give you an equal number of questions. Is the increase in Sargassum the answer? Can it be that simple? The truth may be more complicated. What happens here does not only take place in the water. Some people even wonder if supernatural powers are involved. I actually believe so. Other individuals maintain there are scientific answers. One theory is about monster waves. They come at a certain rhythm and are much higher than what is normal.

Another theory is about gas bubbles of methane hydrate. They create holes which can sink ships. With that many powers in an area, the risks increase. It is difficult to navigate among that many dangers.

Zachary Quinto: ‘The scientific theories seem reasonable but carpets of algae, monster waves and ghost vessels do not contribute to a solution. What happens in the Bermuda triangle is not only related to water. Thanks to scientists such as Philippe we find new wrecks in the triangle, wrecks that can give us new clues. But there are many wrecks we have not found yet. Among them are a few from the most mysterious incident.



Six aircraft disappeared on the same day, an incident called Flight 19. On December 5, 1945, some months after the end of the war, 14 airmen in five aircraft were in the air above the Atlantic Ocean on their way from Florida. But they became disorientated at the Bermuda triangle. Despite their skill and the advanced technology of the aircraft, the five planes and the 14 airmen disappeared. There are no traces. But the tragedy does not end there. A hydroplane with a crew of thirteen was sent on a rescue mission. They also disappeared after a flight time of only 27 minutes. What happened to them and the bomber KB Hayes? Has it anything to do with the wrecks in the area?”

Is it possible that the algae and monster waves are behind all vessel accidents? Perhaps. But that does not explain why several aircraft have disappeared. What is going on in the air space above the Bermuda triangle?



The pilot and triangle enthusiast Jordy Klein wants to find out. **Klein:** ‘I believe there is some truth hidden among the legends of the Bermuda triangle. I have experienced issues myself.’

Jordy grew up in Florida on the western side of the triangle and has always been interested in the deviations. His father is also a pilot. He often accompanied him in the air.



Jordy: ‘My father was interested in the remarkable issues of the Bermuda triangle. We used to fly to the Bahamas and across the Atlantic Ocean. That aroused my interest in the Bermuda triangle. I am the second generation of triangle survivors.

I followed in my father’s footsteps and started to fly through the triangle once I got my certificate as a 17-year-old. I have flown across the triangle hundreds of times and experienced a number of incidents. From time to time, bad weather has come from out of nowhere. The compass has acted strange, the altimeter has gone crazy. I have also experienced magnetic fog, so have many pilots in this triangle. They have compared it to a cloud which embraces the aircraft and severely affects visibility. There is a great difference between ‘common’ and magnetic fog. In a magnetic fog you cannot trust your eyesight or instruments. So many things can go wrong. Besides instrument problems I have got dizzy by turning my head. My interior compass was also affected by the fog.’ – Can magnetic fog make aircraft crash? As, for example, Flight 19? Jordy thinks it is possible. **Jordy:** ‘If you drive a car you can stop and make sure how to drive. But if you trust a compass and it behaves in a strange manner, you’re in trouble.’



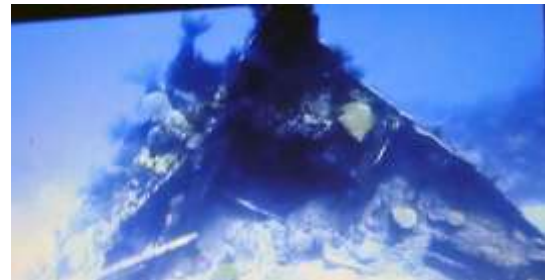
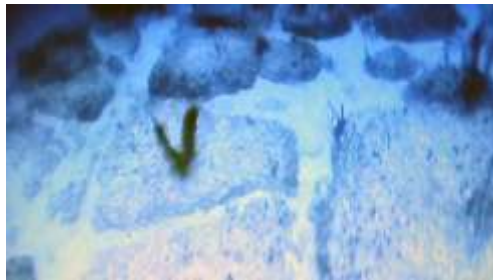
Zachary Quinto: 'In order to test his theory he will fly to the Bermuda triangle with our camera crew and only use the compass to navigate. Most peculiar incidents have taken place off the Florida coast. It is dangerous, but a back-up system can be used in case of an emergency. It is an aircraft from 1949 with roughly the same instruments as 70 years ago. We will trust them today. We are on our way to the Atlantic coastline and the heart of the Bermuda triangle. The area is a hotbed for aircraft and



Jordy: 'When a friend was diving in the Bahamas, he found an aircraft wreck. When he took a look through the window, he saw skeletons. The captain had tried to kick out the front window. The co-pilot seemed to have removed the compass, hoping it would start functioning.' Jordy's plane is three kilometres from the site of the accident. **Jordy:** 'If the magnetic deviation will be repeated today...it will happen here. We're flying above the island of Bimini. On the western shore we can see deviations in the water.'



'We're flying above the island of Bimini. On the western shore we can see



'That is a remarkable reef which looks almost artificial. It's even more remarkable below the surface of the water.' Jody and other pilots believe that the Bimini Road reef is shaped like a pyramid which can affect aircraft and ship navigation. The question is how that is possible. Many remarkable things have happened around the reef. **Jordy:** 'I don't know what's going on down there, but it is a valuable clue to what's going on in the Bermuda triangle.'



'Look at the compass! The fog came out of nowhere!'



'Look at the compass! The fog came from nowhere! The compass has gone crazy. I can't see anything.'



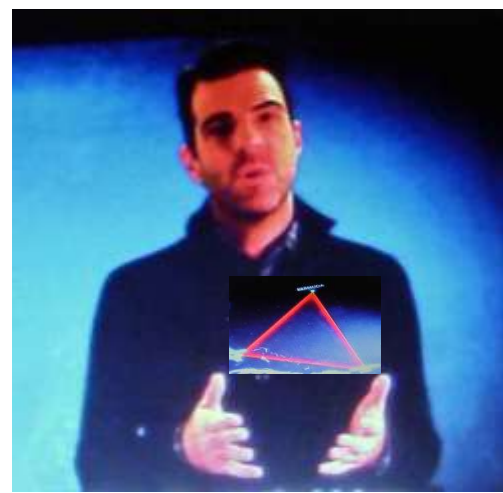
'Look, the compass is spinning and there is turbulence. It's easy to become disorientated. If I trust my compass I will flip, I have no idea about our direction. But I can use my GPS and get out of here.'



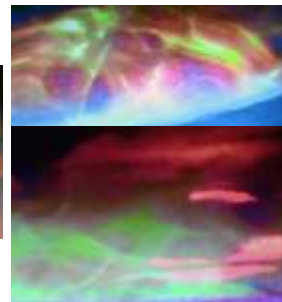
Had I been an inexperienced pilot I would probably have stressed out. A spinning compass is not an asset if you haven't got GPS.' Jordy believes magnetic interference can lie behind the high number of deaths in the Bermuda triangle. **Jordy:** 'Formerly we navigated using our compass and eyesight. Mistakes could result in catastrophes. 50 years ago, many people never came back from here.' After each flight through the triangle, he feels lucky. **Jordy:** 'I fly all over the world, but the Bermuda triangle is the only place where strange things happen.'



Yet, he goes on flying here. He wants to understand what is going on and warn others about the dangers. Today's technology makes the triangle safer. But still many strange incidents can put you at risk..



Zachary Quinto: 'Jordy's experiment indicates a magnetic deviation in the triangle. We've heard theories about gas bubbles, rare plant life and sudden monster waves. Maybe all these go together? We will examine an explorer who, many years ago, sailed through the triangle.



When Columbus sailed in the area in 1492, he had compass problems. This confirms the theory that something magnetic is behind the incidents. But Columbus also saw something else. He described strange light phenomena and flames on the surface. Is there a phenomenon which combines fire and magnetism? In that case, is that the answer we are looking for? The answer may be there, in front of our eyes. Fortunately, we can see a breakthrough. Mineral explorer Nick Hutchings has spent years investigating the Bermuda geology. He thinks he has found what is behind the devastating powers of the triangle.

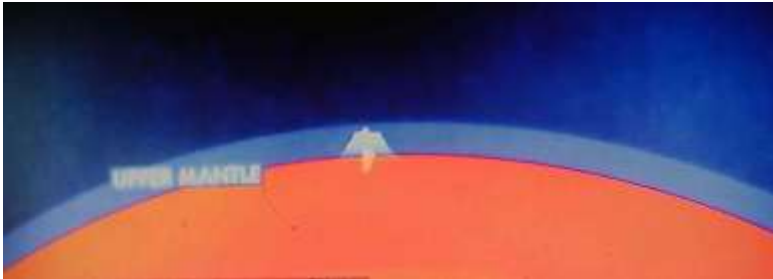
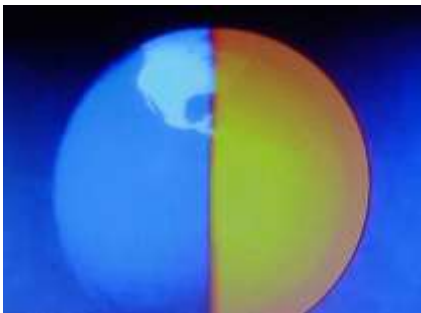
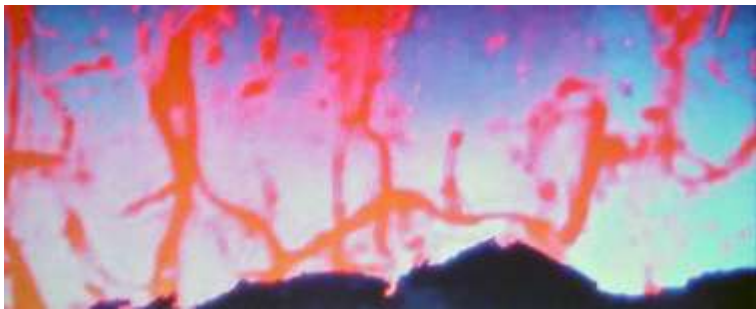


Nick: 'I was born here and I have always been interested in the history of the Bermuda triangle. At Whale Bone Bay we can study the geologic formations of Bermuda. Like many islands, Bermuda was created by a million-year-old volcano.' But, according to Nick, the Bermuda volcano is unique.



Nick: 'The interesting issue is that the Bermuda lava is rare. According to recent research, it's actually unique. There is nothing like it at other sites.' Nick has studied the lava structure for many years in order to lay down the source of its unusual characteristics.

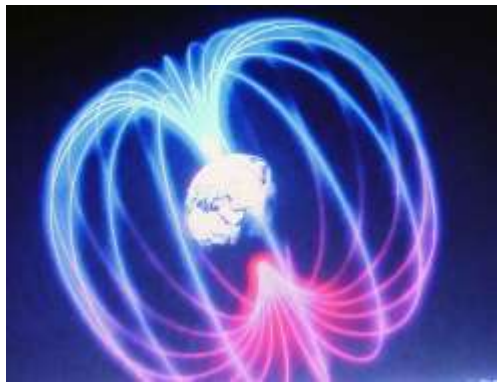
Nick: 'After some time I realised that it's enriched by minerals such as titanium oxide and iron oxide. Together they form magnetite, the world's most magnetic mineral. The Bermuda volcanic rock contains 18 – 20% magnetite, a 'normal' figure would be 1 – 5%.'



Lava from a volcano escapes to the surface from the mantle, approximately 30 kilometres below.



'A study suggests that when Bermuda was created, a unique disruption made magma escape from even deeper down: 650 kilometres. That is why Bermuda contains more magnetite than what is normal. An estimation says 400 billion metric tons. Erosion made it disappear gradually. The volcano slopes slid down into the sea. Magnetite was spread in a 20-mile radius around Bermuda. Even if Bermuda is a small island, it is a very large magnet.' – Volcanic activities and a magnetic rock. That tallies with Columbus' reports from the voyage through the triangle.



A study suggests that large magnetic fields may promote plant growth, plants like Sargassum. Can magnetite be the source of the mysterious weather and navigation deviations which have afflicted travellers in the region? Nick says the answer is Yes!



Nick: 'This is a good example of magnetite in limestone. You can see it down there. Over there it is stratified.'



Nick: 'Here we can see how the compass needle moves away from the magnetic north pole. This is only the tip of the iceberg. Bermuda is surrounded by magnetite.'

Nick: 'The magnetite may have an effect on ships and aircraft in the area. A compass reacts to even small pieces of magnetite. Imagine how 400 billion metric tons can affect aircraft and ships. Imagine also an ancient mariner: suddenly the instrument he needs for navigation starts to behave strange. On maps and nautical charts, we are warned about magnetic deviations. And Bermuda is at the narrow end of the Bermuda triangle.'



Zachary Quinto

Zachary Quinto

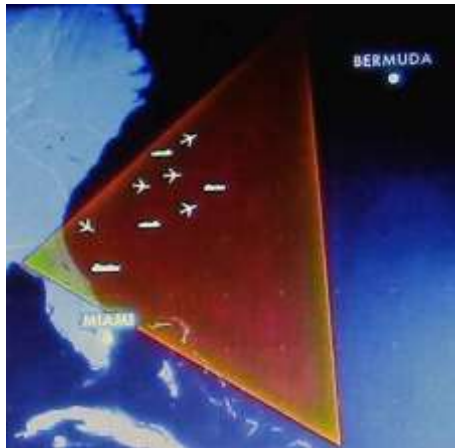


In 1980 a 120-metre ship sank off Daytona Beach

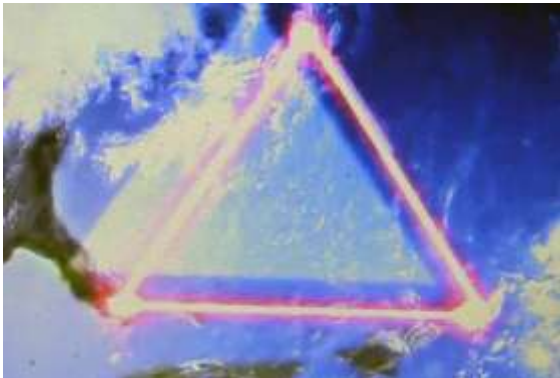
In 1981 an aircraft crashed off the coast of Georgia

In 2018 a Piper would fly from South Carolina to the Bahamas.

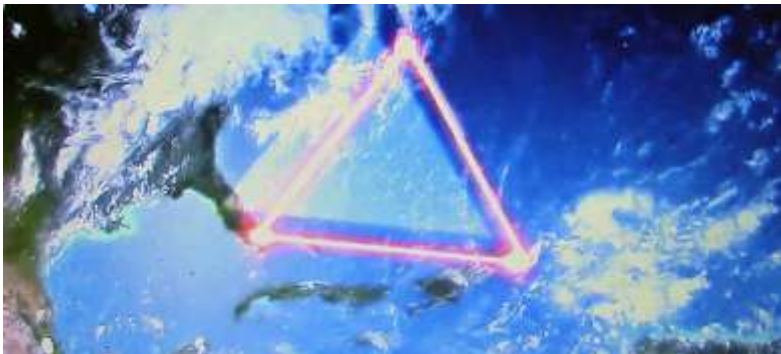
If Nick's theory is correct, the Bermuda triangle deviations and dangers are caused by magnetism. If magnetism is the culprit, we are faced with an additional problem. In 1980 a 120-metre ship sank off Daytona Beach, around 100 kilometres north of Miami. In 1981 an aircraft crashed off the coast of Georgia. In 2018 a Piper aircraft was on its way from South Carolina to Bahamas. 160 kilometres from the coastline the pilot wanted to change courses due to an emergency. The aircraft was never spotted or heard of again. These incidents did not take place in the Bermuda triangle.



As you can see, they form a passage 1600 kilometres to the north-west. The passage can be explained by a new theory which warns about extensive consequences. Maybe the Bermuda triangle is on the move!



Justin Revenaugh, professor of geophysics: 'My interest in the Earth's magnetic field started at college. A solar storm made the northern lights move away from the poles. Since then I have been on top of the magnetic field. What is going on is unusual.



It moves...and may carry away the Bermuda triangle.



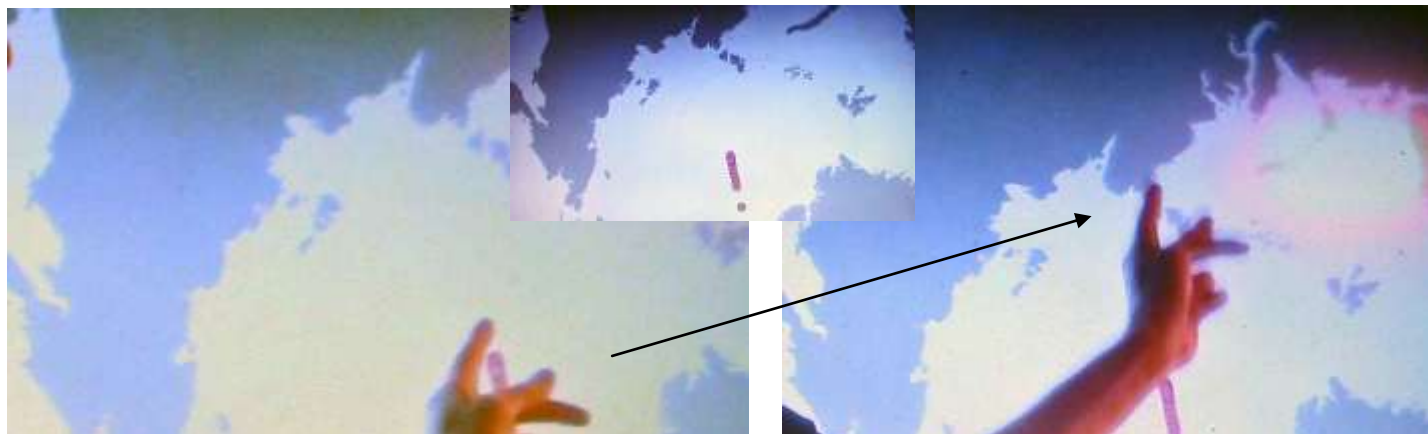
This is the geographic north pole. The points mark its movements

1900.

1990.

Idag.

We'll start in 1900. It slowly moves north, in 1990 its speed increases. Today it moves 55 kilometres north and west.



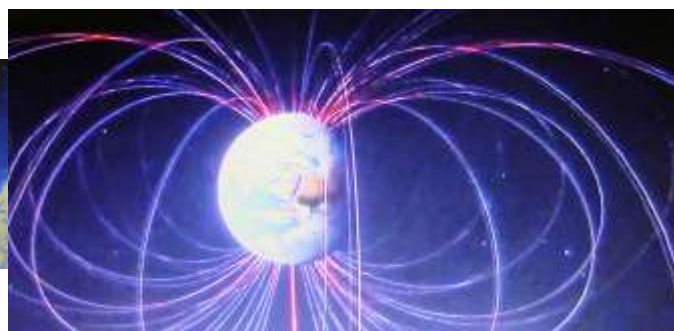
If this continues, it will reach Russia.'

More info at **Industry, NOAA, Dark Star and Global Warming**, pp 50 - 51.

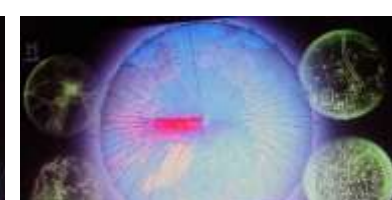
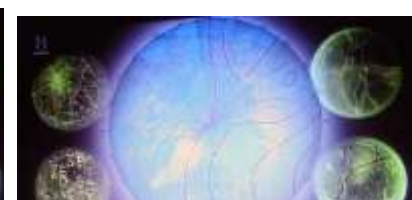
If there are magnetic deviations in the Bermuda triangle, how are they affected by the movement of the magnetic field?



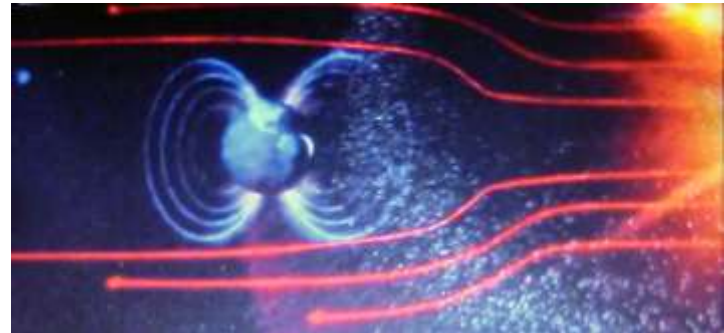
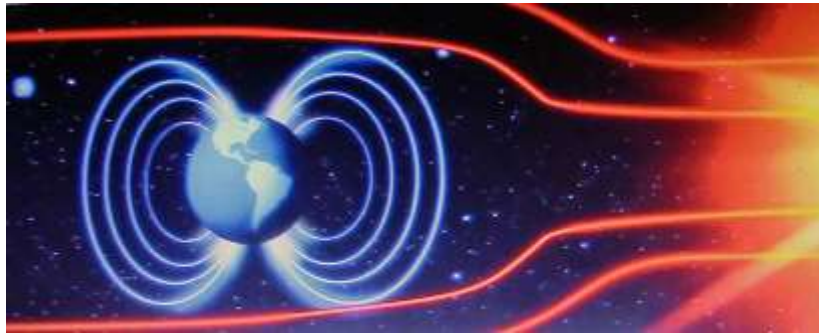
We have seen an increase of aircraft- and ship disappearances to the north-west of today's triangle. The magnetite layers in the waters around Bermuda move in the same direction. Is it just a coincidence?



Justin Revenaugh: 'This much is certain: the movement is very important. In general, people do not know that the magnetic pole is moving. You can't see it, you can't feel it, but navigation equipment is affected. It's rather like the Bermuda triangle problem, but at a global level. The changes mean that maps and software must be upgraded, otherwise GPS and compasses will not work properly.'



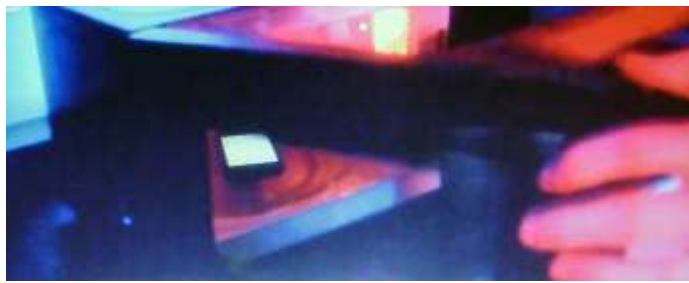
According to Doctor Revenaugh, the implications may be extensive.



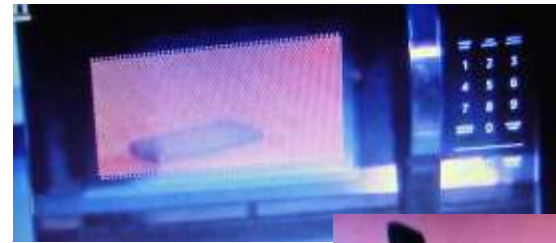
Justin Revenaugh: 'The Earth's magnetic field is a force field. Imagine the USS Enterprise *Star Trek*. When the spaceship is being shot at, laser- and photon radiation are diverted. The idea didn't come from pure fantasy. The magnetic field protects us from space weather, radiation and winds from the Sun. Without this protection such phenomena would affect power grids, gas- and oil systems, mobile and satellite communication, aircraft. And other issues we haven't thought about. It doesn't happen overnight, but it might happen soon.' Justin Revenaugh can illustrate this in a simple way.



Justin Revenaugh: 'In order to illustrate what happens with a weakening magnetic field, I will use a microwave. It creates radiation which can heat water and food. The cabinet protects us from radiation.'



What happens if I put a cellphone inside?



Now I switch it on.



Look.... It only took five seconds. Radiation destroyed electronics. It's still cool, it wasn't heat. The electronics was short-circuited by the radiation.

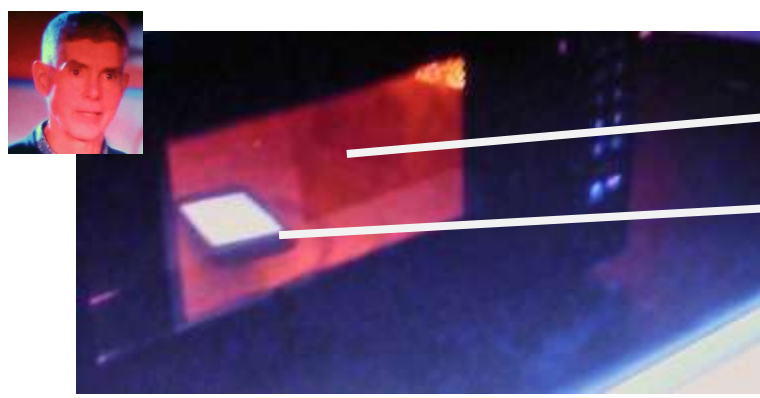
Justin Revenaugh: 'Let's start with 1900. The magnetic field slowly moves north and around 1990 its speed increases. Today it moves 55 kilometres per year north- and westwards. In 1983 NASA, Great Britain and Holland discovered neutron star Nemesis. After that, changes occur on this planet: the Earth's magnetic field starts to move even faster. At the same time, Nemesis' magnetic field is getting stronger and affects the Sun's and the Earth's magnetic fields. It becomes more powerful than the Earth's and the Sun's magnetic fields. In those days there were also discussions on global climate change and warming.'



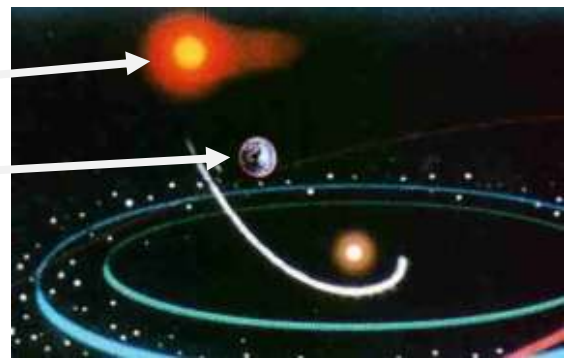
The Sun and Nemesis, the discovery of Nemesis in 1983, the Earth which is between the two. Nemesis has an extremely powerful magnetic field which affects those of the Sun and the Earth, which in comparison become weaker. Professor Revenaugh confirms that the Earth's magnetic field protects us from, inter alia, radiations. The field is weaker now, the protection as well. The powerful radiation warms the surface, this is how global warming occurs and leads to hurricanes, tornados, typhoons and cyclones. Since CO₂ is heavier than air and ends up near ground and in hollows, lakes cannot be included in this context.

The Earth's magnetic field will move faster, so will the melting of the ice as Nemesis approaches.

Justin Revenaugh's simple experiment can be compared to global warming.



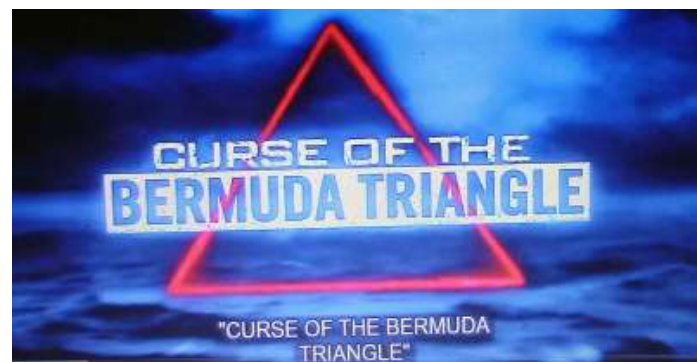
Microwave and cellphone



Nemesis, the Earth and the Sun.

The microwave and the cellphone can be compared to Nemesis and the Earth. If you put a cellphone with a weak magnetic field into a microwave, the radiation will destroy the electronics of the microwave. This is what happens when powerful radiation from the Sun warms and destroys the Earth by passing its weak magnetic field.

Climate science is extensive: space, space physics, astronomy. Global warming and natural catastrophes are also parts of it. Evidence of concerning climate science is introduced by, among others, NASA, NOAA, climate scientists, relevant researchers and others with relevant knowledge. And by history, which repeats itself.



This 2019 project is based on top-level knowledge of the Bermuda triangle and can be compared to **Curse Of The Bermuda Triangle**, a 2020 project which includes UFO. More info at **Industry, Conquering Space IV, Final Days and Goal**, pp 241-264. These two projects walk hand in hand. The Bermuda triangle mystery is solved by top-level knowledge.





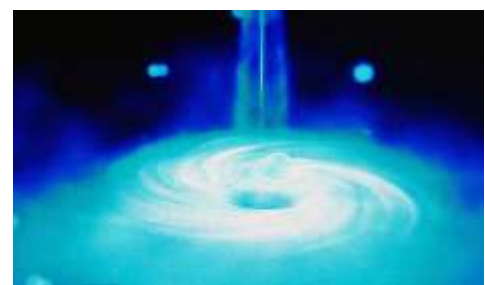
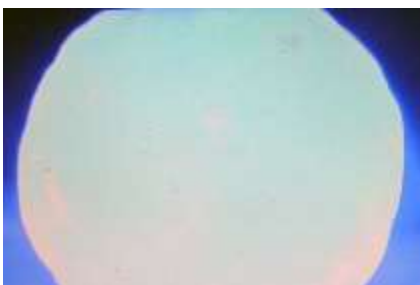
Pre-historic astronauts and the Earth's

This 2018 project deals with prehistoric astronauts and the Earth's black hole. The fact that prehistoric astronauts visited our globe is not a new story for anyone who has read about and followed the development of the Earth. But the black holes are new.

Let us have a close look at this unique 2018 project.



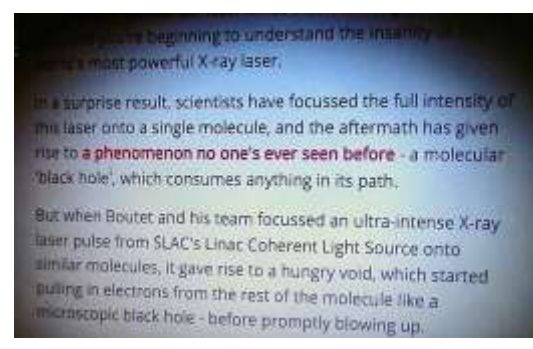
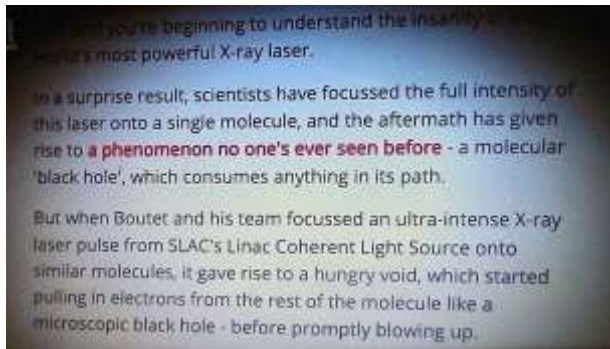
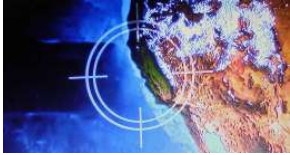
Menlo Park in California, May 2017. Scientists at the National Accelerator Laboratory directed the world's most powerful X-ray laser at a molecule. They wanted to see what happens when an X-ray laser collides with a multiple-electron atom.



Would the electrons be pushed out of their trajectory around the atom and create something new with only a few electrons? But the system behaved strange. Initially, things happened according to plans. The electrons were removed from their trajectory. But suddenly a powerful force emerged, attracted the electrons into an empty space and the molecule exploded.



John Brandenburg, PH. D.
Plasma Physicist, Orbital Technologies



It attracted all electrons from the molecule in a way that nobody had predicted. The electrons attracted all the other electrons.



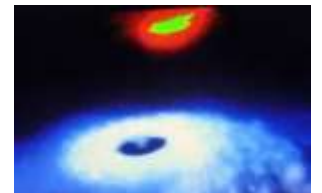
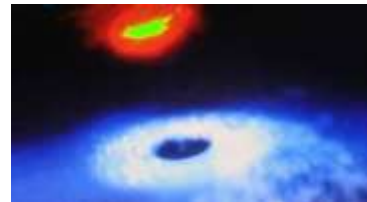
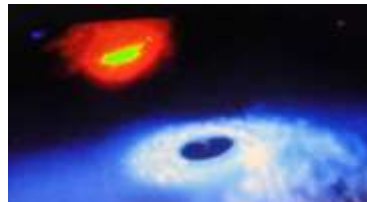
MICHIO KAKU
AUTHOR, THE FUTURE OF HUMANITY



Then they saw something that looked like a black hole, an area whose gravitational field is powerful enough to block light..



MICHAEL DENNIN, PH. D.
PHYSICIST
UNIV. OF CALIFORNIA, IRVINE



It is an accumulation of mass in a very small area. The gravitational field is so powerful that not even light escapes, thus 'black hole.' If the black hole rotates, the phenomenon becomes even more remarkable.



John Brandenburg, PH. D.
Plasma Physicist, Orbital Technologies



An eddy (vortex) is created around the black hole, a space-time vortex.



MICHIO KAKU
AUTHOR, THE FUTURE OF HUMANITY



X-ray Blast Produces a 'Molecular Black Hole'

Beam Power

The particle beams that do the heavy lifting for this kind of imaging require sophisticated equipment to create. At the SLAC National Accelerator Laboratory at Stanford University, their linear accelerator stretches out for two miles, focusing beams of charged electrons onto minuscule targets at extremely intense energies. In a paper published Tuesday in *Nature*, SLAC researchers observed peculiar behavior among atoms subjected to their X-ray beam, and they're calling it a "molecular black hole."

As predicted by the laws of physics, the idea of electrons theft doesn't happen in nature because the beams are not as intense, dense and powerful, and with enough power, however, the naked nuclei overcome the grip of neighboring atoms and siphon off electrons, in a process, the researchers say, that is similar to a black hole consuming a star.

The molecular vacuum created inside the atoms was an extreme black hole, which pulled in neighboring



It looked like a black hole but lacked gravitation. It was electromagnetic and used laser beams. How was that possible? According to Einstein, all forms of accumulated energy can form a black hole. We have believed that black holes only exist in space. How come they can be produced in a laboratory on Earth?



DAVID CHILDRESS
AUTHOR, THE ANTI-GRAVITY FILES



We believed that black holes emerge when stars die, but experiments have demonstrated that black holes can be created in different ways with electromagnetic energy or high-level energy vibrations in a laboratory. This means that black holes can be found anywhere. There are areas on the Earth we do not understand and whose characteristics remind us of black holes. Maybe they really are black holes.



If black holes exist on our globe, can they explain the stories about strange phenomena as ancient as thousands of years?



GIORGIO A. TSOUKALOS
PUBLISHER, LEGENDARY TIMES MAGAZINE



There are stories about individuals who have skipped time or have arrived much faster than they should have on an aircraft or ship. Can this be explained by strange phenomena close to a black hole?



RABBI ARIEL BAR TZADOK
FOUNDER, KOSHER TORAH SCHOOL



A vortex or a portal may open to other nations or dimensions which exist around us. According to prehistoric astronaut-technicians there is evidence of incredible voyages through space-time portals in ancient scriptures.

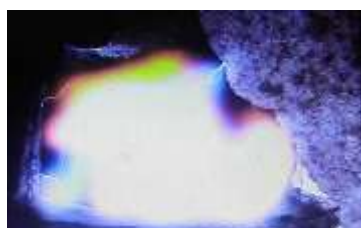
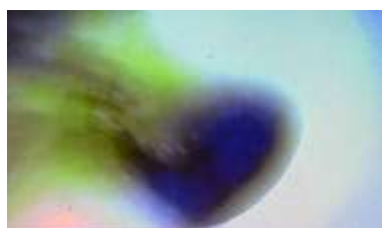


One example can be found in the Old Testament and involves the story about Moses on Mount Sinai. Something very strange happened there.





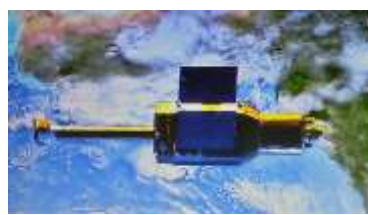
According to legend, a cloud descended when God called Moses to Heaven. A gate was opened in the cloud and Moses entered. The gate was closed, and he ascended. According to the Bible this took 40 days and 40 nights. No food, no water, no sleep. Forty days for us here, how long time was it for Moses in Heaven? What kind of gate was it? The cloud seems to have been a means of transport in an open space-time eddy. The whole mountain seems to have radically changed by the basic physical laws. If that was so, the Gate to Heaven may have been a change by the space fabric and, maybe, the actual time. By using our present-day knowledge we must again investigate what the Bible really teaches.

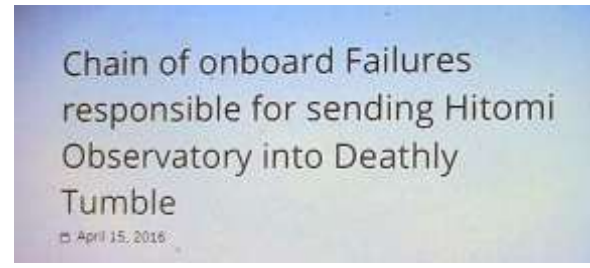
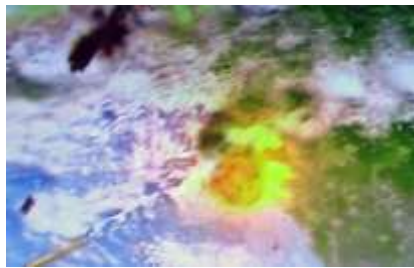


If there are black holes here on Earth, what does that imply? Would they open gates through which we can travel back and forth through space-time? In that case, have they been used by extra-terrestrials for centuries? There may be further clues in ancient knowledge of eddies, carved in rock.



JOHN BRANDENBURG, PH.D.
PLASMA PHYSICIST, ORBITAL TECHNOLOGIES

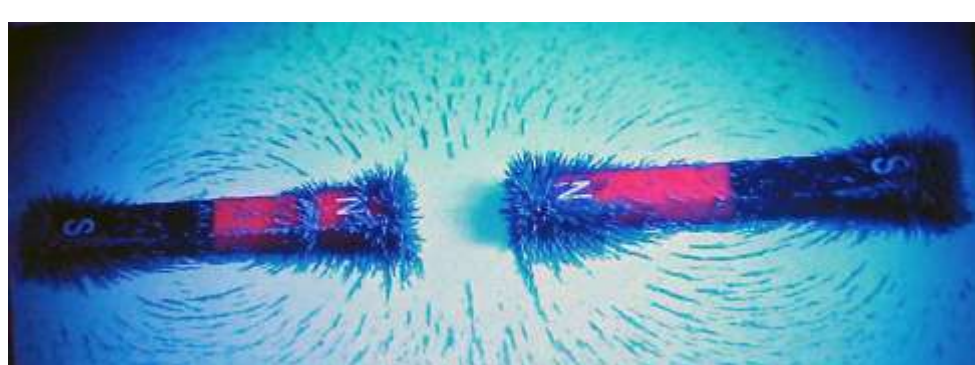
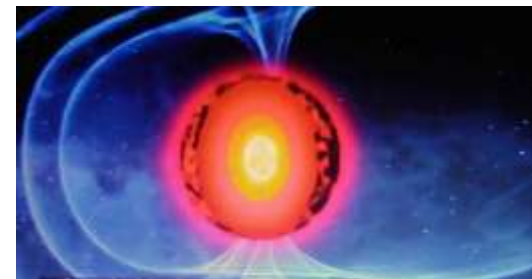




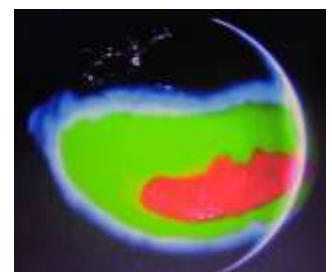
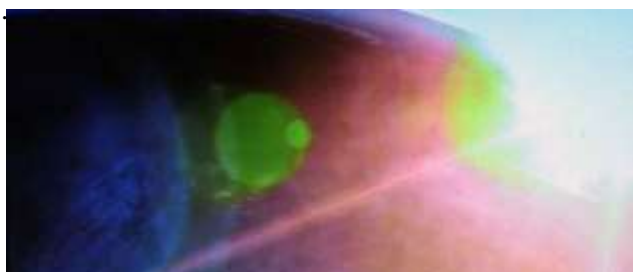
Space, March 26, 2016. **Hitomi**, a space telescope launched by the Japanese space agency JAXA only five weeks earlier, started to tumble uncontrollably. The control system on board did not manage to stop the rotation and after a couple of hours the telescope fell apart and abandoned its orbit. The damage survey highlights an important issue. The navigation system which was supposed to keep the course had problems passing a high-radiation field.



The navigation system which was supposed to keep the course had problems passing a high-radiation field. The South Atlantic Anomaly, SAA.



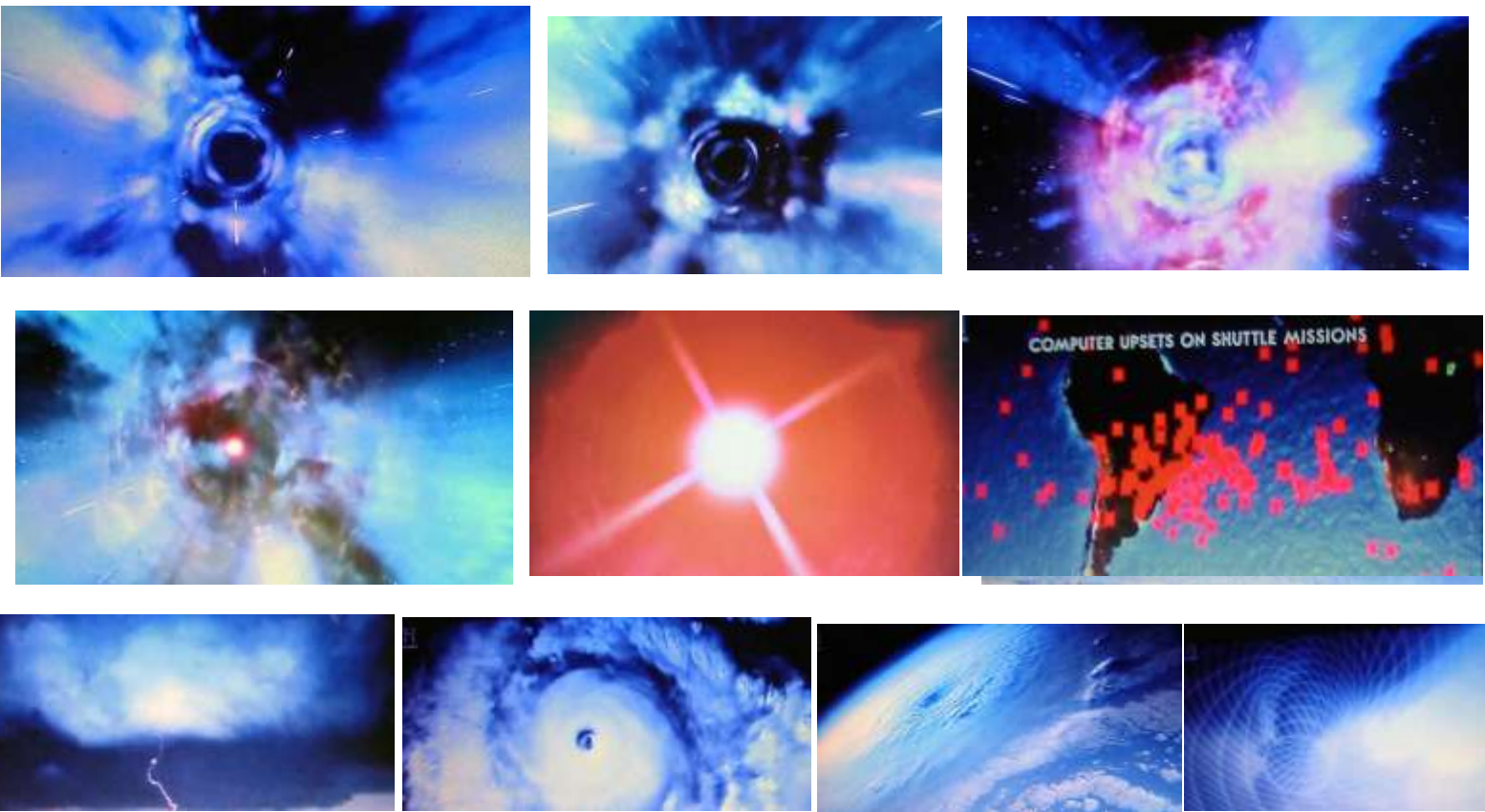
The Earth's magnetic field is created in its interior by fused iron and other compounds, hot streams created by radioactive decay in the core. It is a complicated phenomenon. What we can understand on the surface looks like magnetic field of a magnet, but there is evidently a defect which goes very deep.



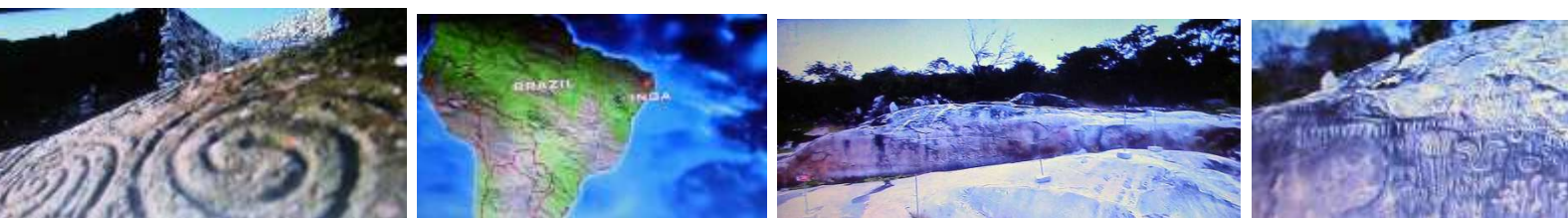
It reverses the Earth's magnetic field and is called the South Atlantic Anomaly, SAA. Astronauts or satellites which pass through the area are subjected to a short but intense radioactive radiation. The magnetosphere covers almost all of South America and the Atlantic Ocean and has caused trouble for spacecraft during decades.



This is why the ISS, the International Space Station, is equipped with extra protection. Computers have crashed when space shuttles pass its powerful radiation. When you pass the SAA, strange things happen. There is lightning, the electronics raise difficulties and space shuttles must have special protection equipment. Scientists know about the anomaly, but they do not agree.



A growing number of scientists believe that it creates eddies which can change both time and space. Nature has found thresholds and gates we know nothing about, and which can be opened during specific circumstances. If we can change space by electromagnetic fields, then nature, on its own, using the enormous electromagnetic field which they create, can build electrodynamic black holes or revolving black holes.



Many individuals who believe in prehistoric astronauts agree and say that our ancestors even carved the messages in rocks all over the world, none in Brazil. Here there is an ancient rock formation called the Ingá Stone. It is covered by rock carvings of unknown origins but with a message. Some scientists state that those who deciphered it knew a lot about astronomy and physics.



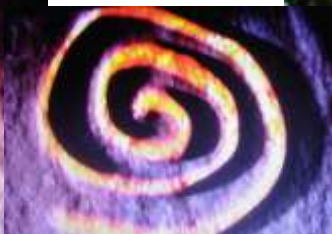
WILLIAM HENRY
AUTHOR/INVESTIGATIVE MYTHOLOGIST



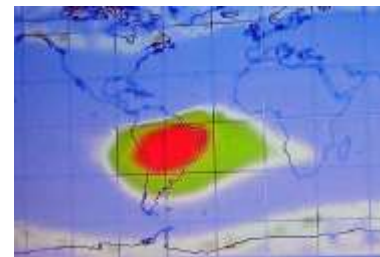
In the middle of the Ingá river in Brazil we find this rock with a length of 45 metres and a height of 3.8 metres. It is covered with detailed, mysterious carvings. We do not know who did it and why. The carvings are very striking.



RENATO LONGATO
AUTHOR, E.T. PRESENCE



Some of them point to constellations. Crux, Milky Way, Orion and others which describe an area. Some say that the spirals have something to do with energy, energy eddies and there is a **magnetic deviation** around the stone. The Ingá Stone contains information on astronomy..

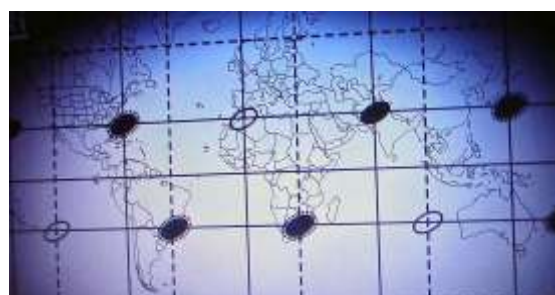


Native people did not normally depict such items, they were more interested in supernatural phenomena. This makes us wonder if the carvings are in fact made by extra-terrestrials. The rock is also located in exactly the same geographical area. May the enigmatic carvings be inspired by the arrival of a pre-historic space traveller, one who touched down here many hundreds of years ago? In that case, can the largest and most known, the SAA, be one of many similar deviations on our planet?



The Bermuda triangle, the Devil's Sea. Easter Island. The Indus Valley. These are some of the twelve triangular zones across the globe. They are known for disappearances, energy and inexplicable phenomena, among them 'vile vortices'

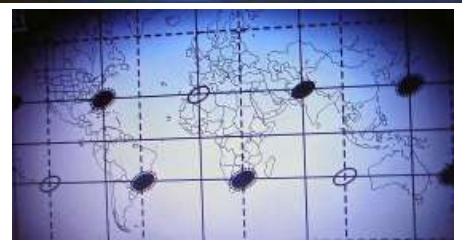
Ivan T Sanderson



ANDREW COLLINS
AUTHOR, LIGHTQUEST



Den skotske biologen,
kryptozoologen-



The Scottish biologist, cryptozoologist and author Ivan T Sanderson had a theory of paranormal phenomena which occurred in various in in various parts of the world. He pinpointed twelve sites and called them 'vile vortices'. In other words, violent vortices.



DAVID CHILDRESS
AUTHOR, THE ANTI-GRAVITY FILES



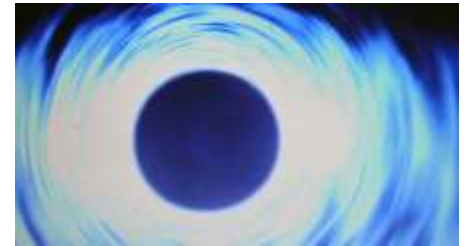
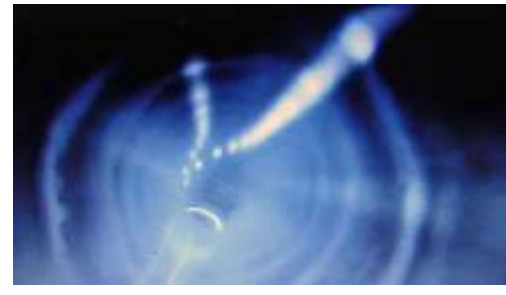
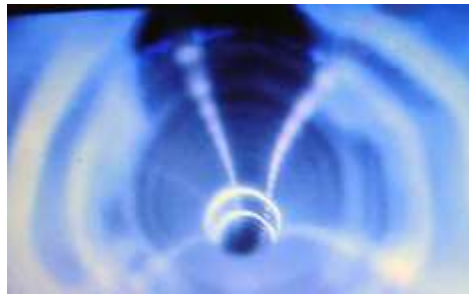
Sanderson tried to explain all disappearances. There is a geometrical pattern on Earth, he believed that was the explanation, sites with strange energy patterns.



GEORGE NOORY
RADIO HOST, COAST TO COAST AM



His research proves to me that there is much we do not understand. I don't know whether it is natural or supernatural, but there is no doubt that that our globe is very unusual in these areas.



If extra-terrestrials visited the Earth long ago, they might have exploited what they found here and knew enough of technology to be able to transform sites to zones with elevated energy which they could use as black holes, worm holes or something else. Is it possible that 'vile vortices' and phenomena such as the SAA can explain disappearances? Are there places on Earth where black holes or portals are created? Areas where individuals without being warned suddenly are thrown into another dimension (another world)? If we look down into a black hole, we get the impression that it might lead us to another place. We would be able to descend through it to another part of our Universe. Can extra-terrestrials have used these portals to be able to visit the Earth? Pre-historic astronaut theorists believe we ought to investigate the area where several disappearances have occurred, e.g. the Bermuda triangle. More about this above, pp 4 – 17.



BRUCE GERNON
PILOT/CO-AUTHOR,
BEYOND THE BERMUDA TRIANGLE



Fort Lauderdale, Florida, December 5, 1945. Five TBF Avenger fighter aircraft, the so-called Group 19, are about to engage in a training mission. Suddenly, all five of them, have problems with malfunctioning instruments. They call air traffic control to report a failing compass. They had two sets of navigation instruments, but neither worked. They did not know their position. They did what many others would have done, they turned back and forth. This is confusing for pilots.



. The fighters disappeared from the radar. The last calls were sinister disruptions.



The navy launched two rescue aircraft. They also disappeared, 20 minutes after take-off. No parts were found, no life jackets, no life rafts.



ANDREW COLLINS
AUTHOR, LIGHTQUEST



Fighters, which may have belonged to Group 19, have lately been found, but nobody knows what happened. This mystery is one of many inexplicable incidents in the Bermuda triangle.



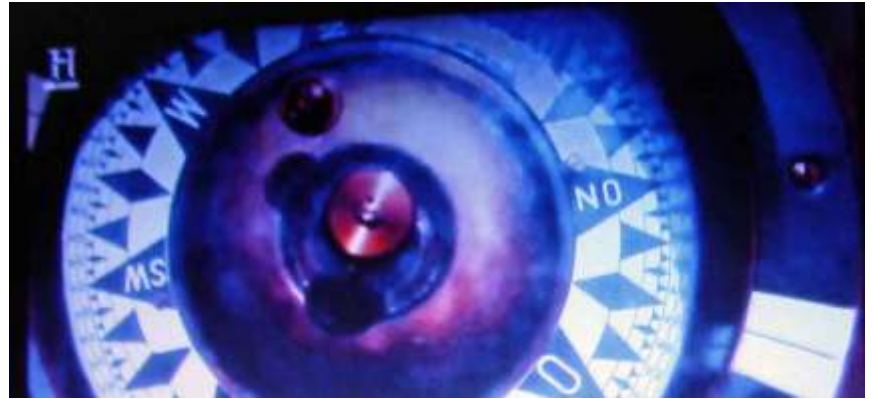
DAVID CHILDRESS
AUTHOR, THE ANTI-GRAVITY FILES



The Bermuda triangle is located off the coast of Florida. Its northern point is the island of Bermuda. Then it stretches down to southern Florida and to the Bahamas. Several remarkable incidents have taken place here.



ANDREW COLLINS
AUTHOR, LIGHTQUEST



It goes way back to Christopher Columbus. He had problems with his compass when he sailed through the area, it did not function in the Bermuda triangle. He also saw mysterious lights in the same area some days after his compass problems.



The Mary Celeste was found in the Bermuda triangle with no crew. Nobody could explain why.

DAVID CHILDRESS
AUTHOR, THE ANTI-GRAVITY FILES



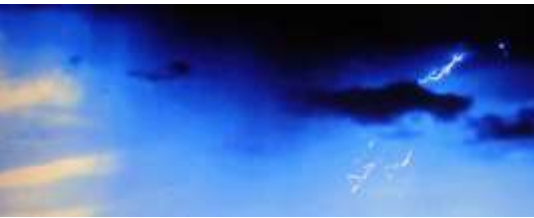
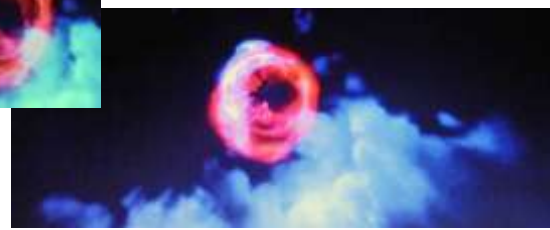
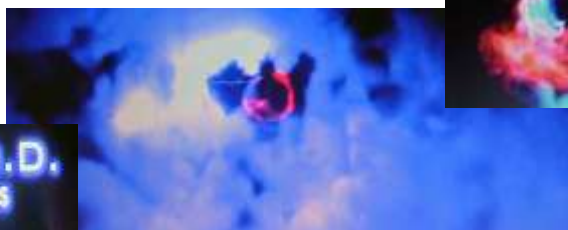
'What is strange, is that these people disappeared before a number of witnesses during inexplicable circumstances. They just vanished from the surface of the Earth.'

WILLIAM HENRY
AUTHOR/INVESTIGATIVE MYTHOLOGIST

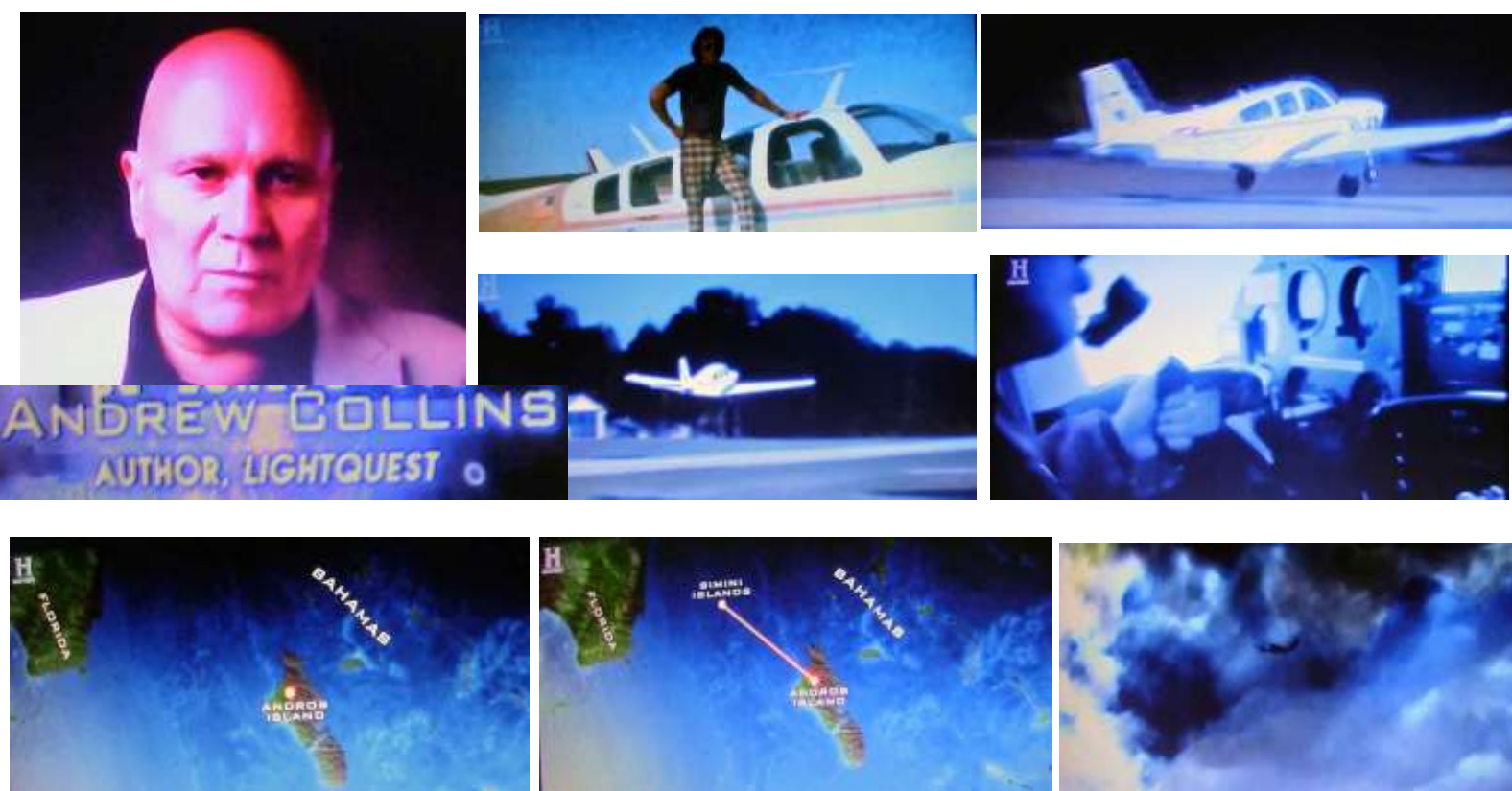




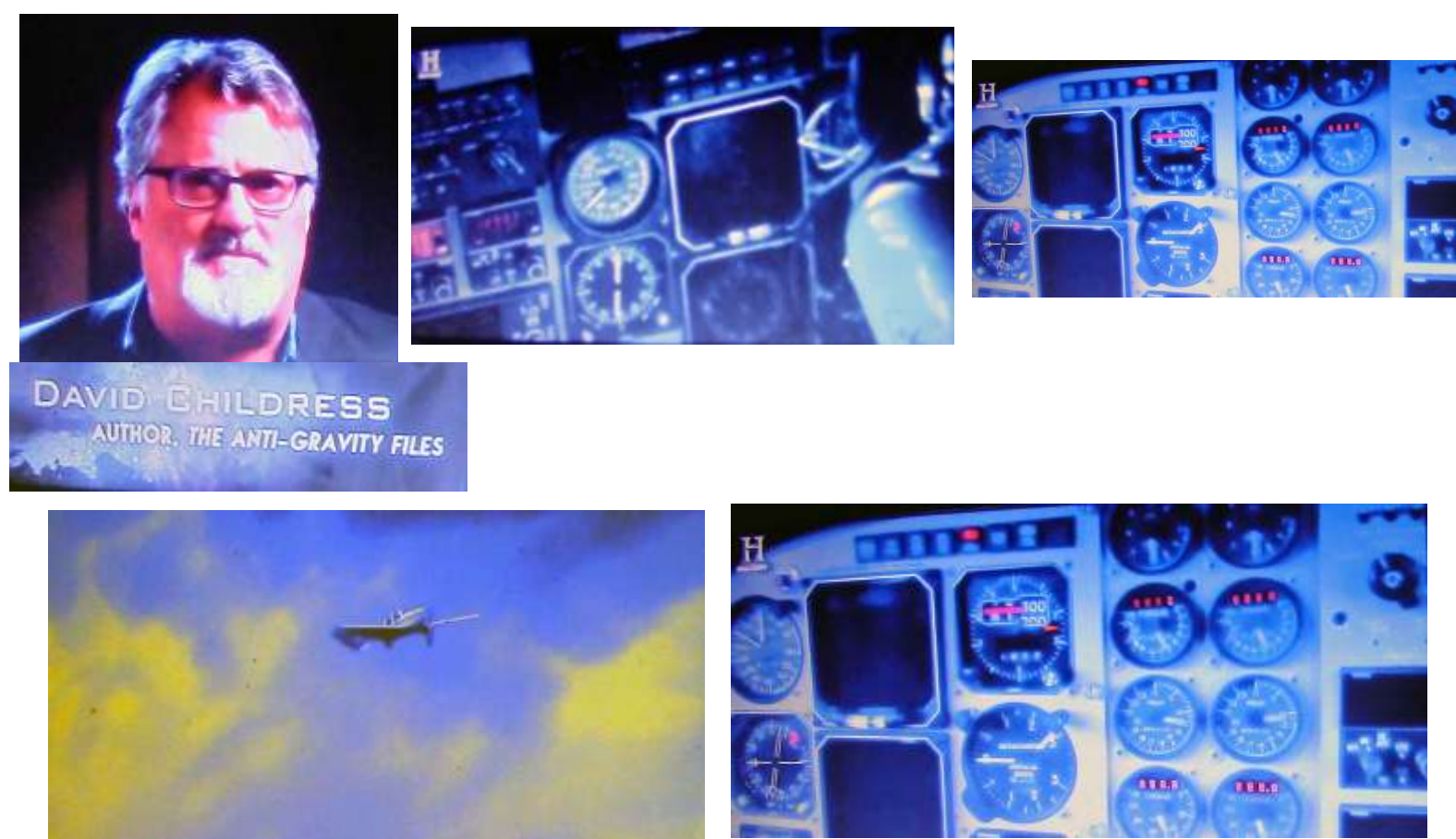
When you pass through here, you don't know if you will ever return. Scientists and researchers have for decades tried to find the cause behind the disappearances. They are puzzled by failing compasses which suddenly point at the geographical north pole instead of the magnetic one.



Electromagnetic phenomena during thunderstorms might open portals in space-time, something we never believed was possible. We also know very little about lightnings, they produce millions of volt, but that is not enough to make possible a leap from a cloud down to the Earth or between clouds, but nature can do it. If we add the remarkable location of the Bermuda triangle where warm and cold ocean currents collide, this can produce many strange physical phenomena. Can thunderstorm clouds and strong ocean currents produce unexpected and extra-terrestrial effects? Those who believe in pre-historic astronauts believe it is possible and refer to pilot Bruce Gernon's story: such phenomena exist.



On December 4, 1970, almost exactly 25 years after the disappearance of Group 19, pilot **Bruce Gernon** was in the air between the islands of Andros and Bimini when he experienced something quite incredible.



The instruments flipped out. He had been inside the Bermuda triangle when it started. During the years, they have tried to find out what really happened.



DAVID CHILDRESS
AUTHOR, *THE ANTI-GRAVITY FILES*



BRUCE GERNON
PILOT/CO-AUTHOR,
BEYOND THE BERMUDA TRIANGLE



Adam Norwiten

In March 2018, pre-historic astronaut-theorist **David Childress** arrived at an airfield in West Palm Beach. There he met with one of the very few men who have experienced the remarkable powers of the Bermuda triangle and survived. **David:** 'What are we going to do today?' **Bruce:** 'We will recreate the flight I carried out in 1970. I'll show you. We'll head for the island of Andros and descend to an altitude of 300 metres. That's where it started in 1970. I'm the only individual who has flown through a tunnel vortex and survived.' **David:** 'Have you done it again?' **Bruce:** 'Not exactly the same, but that's what I want to do today, inside the Bermuda triangle.' **David:** 'It's a return flight, isn't it?' **Bruce:** 'Yes, we'll return.' **David:** 'Okay. I'm ready.'

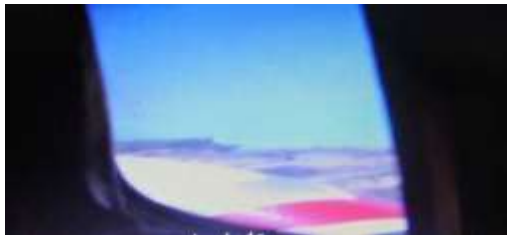
Something happened at Easter Island, something that reduced the number of inhabitants. Extra-terrestrial groups have harvested genetic material. Maybe it is from there they were transported to 30 kilometres outside West Palm Beach in Florida.



From North Palm Beach airfield 30 kilometres from West Palm Beach in Florida, the author and scientist David Childress and pilot will recreate Bruce Gernon's mysterious flight 50 years ago.



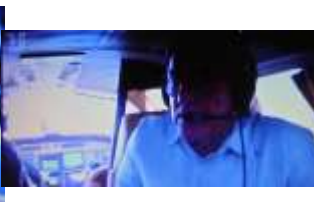
He overflowed the so-called Bermuda triangle when he experienced what he calls an inexplicable displacement of time.



David: 'Bruce, this happened in 1970 and you flew from the island of Andros. Who were with you?' **Bruce:** 'My father and our partner. This is where I started and to ascend to 300 metres, like now. I started doing that straight above the sandbank over there. There it is!' **David:** 'It's that one! Okay.'



Bruce: 'I don't know. It looks sinister, not much around it. A very remote area.'



David: 'What was that? Did you feel it?' **Bruce:** 'There it is again. Did you get it?'



Bruce: 'Maybe we should...Okay. You can't control it? No problems, just some turbulence.' **David:** 'Turbulence... I could feel it.'



David: 'It's pure luck we didn't disappear. **Bruce:** 'This is exactly where it happened.'



David: 'Maybe a forewarning.' **Bruce:** 'Maybe.' **David:** 'Did you think something strange would happen on that day?' **Bruce:** 'No, not at all. Suddenly a strange cloud appeared before us. It was shaped liked a lens and sort of just hung around. It looked strange. When I approached it, it grew, suddenly I was inside. I saw nothing. There was lightning whose intensity increased the further we got into the cloud. It also grew darker, almost like night. My father wanted to turn back and enter the cloud again, but I said no, I was scared to death. We couldn't go back. I told my father to calm down.'

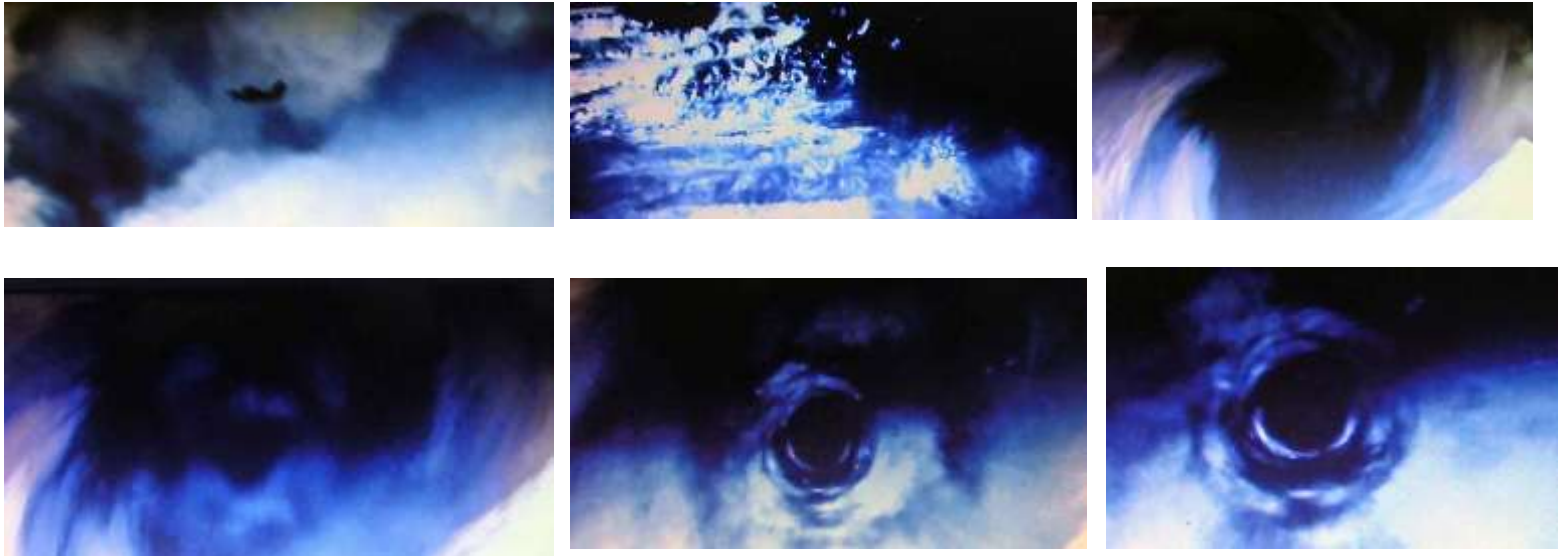
Instead of turning back, Bruce exited the cloud and stayed on his planned course. When he came out, he realised that the situation was even more absurd than he had thought.

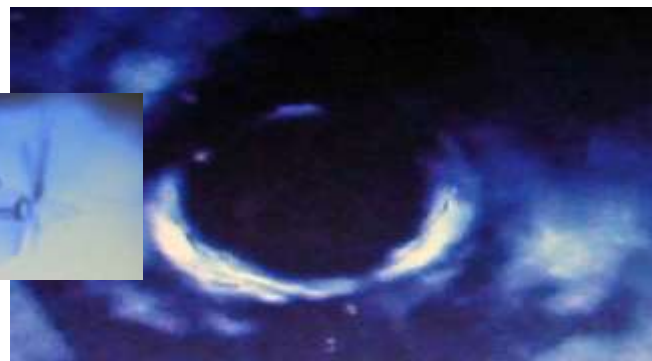


His aircraft was surrounded by a violent storm and there was no way out.



Bruce: 'I felt locked up by the storm. Then I saw a large tunnel, 1.5 kilometres wide and 15 kilometres long. 'Let's pass through it', I said.'



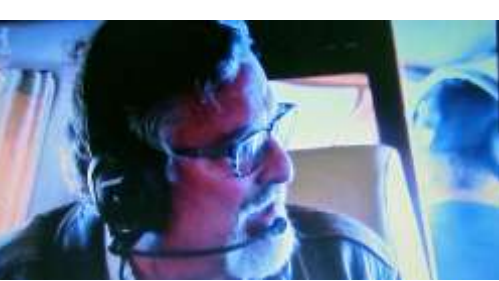


Bruce: 'Something happened in the tunnel. The cloud formed a spinning line which rotated clockwise. It felt like aquaplaning. Zero gravity – we just floated forwards.'



Bruce continues: 'When I exited the tunnel, I saw how it fell apart. The air-traffic controller was talking and sounded very exhilarated. 'I have a flight above Miami Beach', he said. 'No', I said, I'm 30 minutes from there, I'm at least 300 kilometres east of you.'





'Below me was Miami Beach. I had covered 150 kilometres in three minutes.' In order to cover that distance in that time, Bruce's aircraft must have kept 300 kilometres/hour, which was out of the question. **David:** 'But the others, except for some fog...didn't they notice something?' **Bruce:** 'No, nothing. But their watches were losing 20 minutes. I think I saw the space-time web, I think it's behind the Bermuda triangle mystery. Was the tunnel an electromagnetic vortex?'



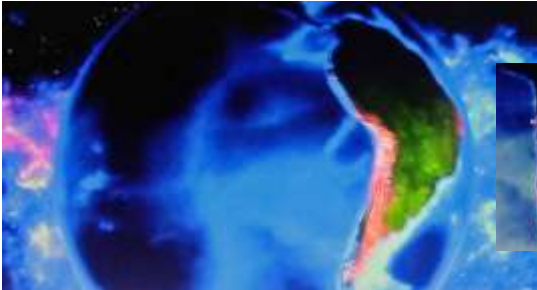
A vortex, which, like a black hole, can change both time and space?



Pre-historic astronaut theorists saw it in that way. They mean there is more evidence to be found if you study the disappearance of ancient civilisations.'



ED BARNHART, PH.D.
ARCHAEOLOGIST
DIRECTOR, MAYA EXPLORATION CENTER



Easter Island. The Pacific Ocean island, more than 3 200 kilometres off the coast of Chile, was once *rapa nui* – home of the people. It flourished during centuries but suddenly disappeared in the 18th century. Once, there may have been 10,000 inhabitants on the island, but a hundred years later, after the arrival of the Europeans, they were as few as 1,500. Something happened which decimated the number of natives. While historians have discussed the cause of the mass disappearances, some pre-historic astronaut theorists believe that Easter Island is located in one of the twelve areas which cryptozoologist Ivan T Sanderson called **wild vortices**, areas with remarkable electromagnetic activity.



RENATO LONGATO
AUTHOR, E.T. PRESENCE



There are areas with unknown energy: Easter Island, Mexico, Egypt, Indus Valley and also Tibet in Asia. In these areas there are also large rock sculptures. How can we explain that? The only credible explanation is a pre-historic contact with sophisticated extra-terrestrial civilisations. The traditions among the Rapa-nui people are incredible. Their community is built on the concept that they are ancestors of the Birdman.



GIORGIO A. TSOUKALOS
PUBLISHER, LEGENDARY TIMES MAGAZINE

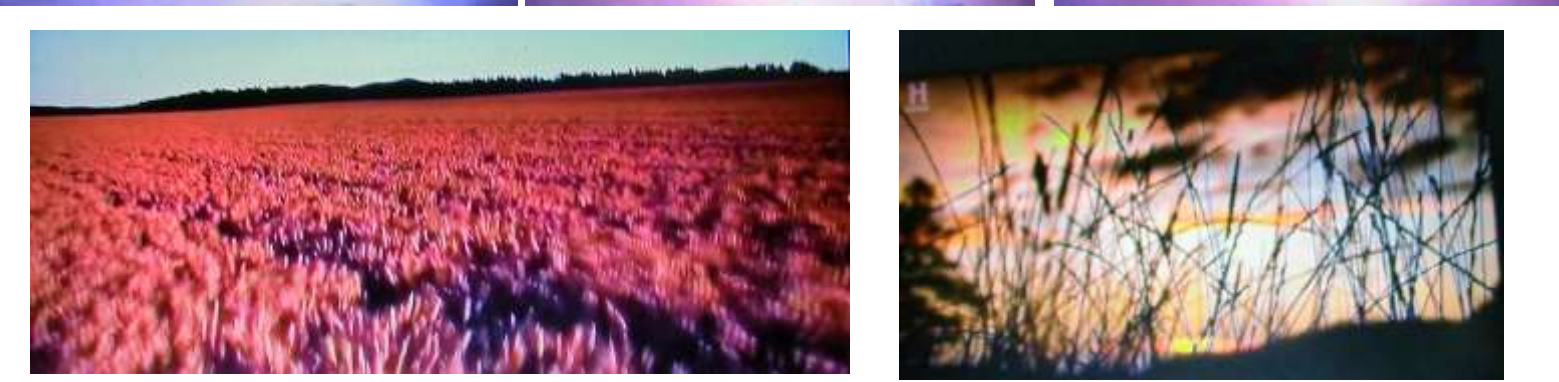


The Rapa-nui tradition might be part of a description of extra-terrestrials who were involved in what happened on Easter Island.



LINDA MOULTON HOWE
INVESTIGATIVE JOURNALIST, EARTHFILES





Extra-terrestrial groups have carried out terraforming and harvested genetic material on this planet for more than 270 million years. Was Easter Island a genetic experiment? Is that why they were moved away? Is it possible that Easter Island, which like the Bermuda triangle, is situated in a zone with high electromagnetic activity, serves as a portal for extra-terrestrials? An entrance which made it possible for extra-terrestrials and human beings to travel between dimensions? Pre-historic astronaut-theorists say that and suggests it could happen all over the world.

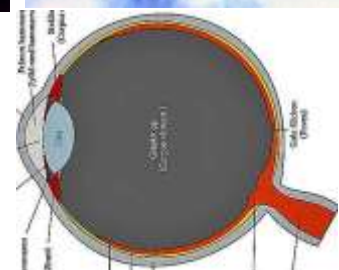
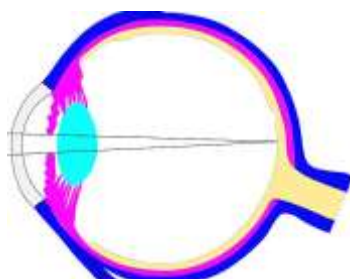
A pilot, **Jordy Klein**, appeared in these two rare projects. By test-flying through the fog in the Bermuda triangle, he proved that the Earth's magnetic field affects the compass. Pilot **Bruce Gernon** had the same experience, but he was inside a tunnel of clouds. The question is what happened. From where did the fog and clouds suddenly come? A UFO can change its appearance from one minute to another. By changing its level of frequency, a UFO may become invisible. A UFO can create a chain of events such as fog or clouds. It all depends on the mode of vibration.



The pictures demonstrate how a UFO changes its appearance and turns into a cloud. Pictures 2 and 3 depict a tunnel of clouds associated with UFO.



Jordy Klein. 1950. An invisible UFO stood still before him. It suddenly appeared as fog, he flew through the UFO without being able to see it. A UFO has its own field of gravitation which is stronger than the Earth's magnetic field. The compass was incapacitated and there was turbulence. The UFO deliberately let him pass through the fog. As far as I understand, the UFO was very gentle and made sure the flight through the fog was successful. He did not mention any difference in time before or after the flight. This was also part of the secrets of the Bermuda triangle.



Bruce Gernon 1970. An invisible UFO, visible as a lens-shaped object. He describes the lens-shaped cloud, suddenly right before him. 'Suddenly a remarkable cloud appeared before us. It was lens-shaped and was just hanging there. It looked strange. When I approached it, it increased in size. Suddenly I was inside. I saw nothing. There was lightning which gradually increased. It was dark, almost night.'

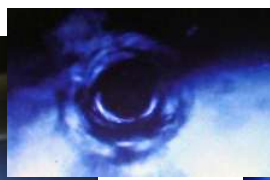
Bruce describes in detail the object he entered and flew through. Each UFO has its own field of gravitation and anti-gravitation and it seems as if he flew right through a UFO and its field of gravitation. There was of course lightning and if you end up in a field of gravitation it becomes dark according to his description.

When he came out of the cloud, he was in a storm in a tunnel which measured 1.5 x 15 kilometres. Something happened inside the tunnel. The cloud formed a spinning line which rotated clockwise. It felt like aqua planning. We had zero gravity, we just floated ahead.

'The cloud formed a spinning line which rotated clockwise It felt like aqua planning. We had zero gravity, we just floated ahead', he said. He had flown 150 kilometres in three minutes. To fly that far that fast, he needed an average speed of 320 km/hour. That was out of the question. The crew's watches had lost 20 minutes.

Bruce: 'I think I saw the space-time web. Was the tunnel an electromagnetic vortex? A vortex which can change both time and space?'





If you board a UFO, you leave life on Earth behind. Inside a UFO, everything is different. You move around as usual, but time is very slow, you even think it has stopped. The anti-gravitation main occupation is to repel everything. Bruce says that he flew 150 kilometres in 3 minutes in the tunnel, 320 kilometres/hour. The tunnel was a field of anti-gravitation which thrust away the aircraft at high velocity. After the flight they noticed that their watches had lost 20 minutes. The Ancient Alien team's comparison with a black hole is good. A UFO is a copy of our galaxy in whose centre there is a black hole. **Bruce:** 'I think I saw the space-time web.' I agree. More info at **Science, On the Road of Life**, pp 6-7. I agree: extra-terrestrials arranged this flight as a demonstration, a positive message.

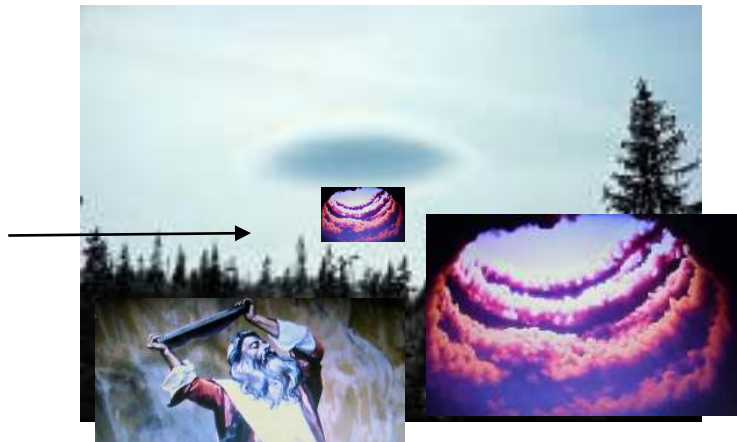
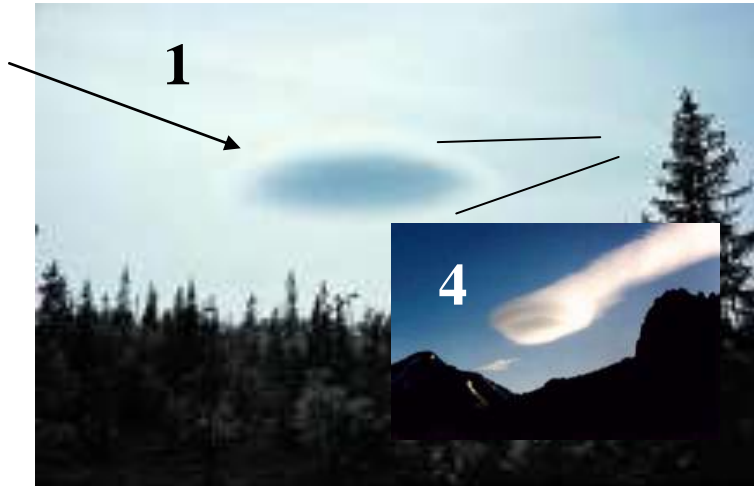
In picture #1 there is a white circle, its field of anti-gravitation, around the spacecraft. Picture #4 depicts a tunnel-like object which reaches out. Why do extra-terrestrials use this object? If you have a well-functioning field of gravitation which protects your UFO, it can be used as a weapon by being focused as a beam. Since this is a field of anti-gravitation, you can vary the tunnel's length and width. You can also achieve various giant radiations in the form tunnels, as depicted in picture #4.

In the Bermuda triangle, people have seen clouds of different sizes. They have come close or passed right inside to never return. They, ships included, disappeared without leaving a trace behind. This powerful radiation can also be used as a portal or as means of transport. One example is **Cascade County, Montana, USA**, where UFOs captured a cow from a field, mutilated it and returned it in the same way. More info at **Industry, Conquering Space IV, Ultimate Time and Goal**, page 215-217. The same thing happened in Peruibe, Brazil, see page – and in **Contact**. In this way, UFOs can abduct human beings who just disappear.

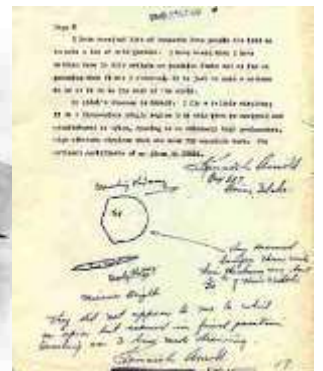
When God touched down in his spacecraft on Mount Sinai and created a cloud near Moses, at the foot of the mountain. A portal was opened. Moses entered, closed the door and was transported to God's spacecraft/UFO. This is what the Bible states.

On this planet human beings have entered various UFOs, both in ancient times and now. They tell roughly the same story about time and their séjour on board the spacecraft.

Extra-terrestrials do still visit this planet and have done so during 7,000 years.



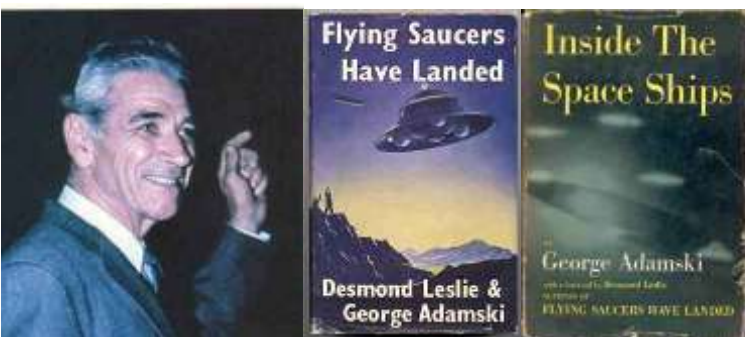
This picture says it all. Gustav Hitler and an alien, one of the Grays, met and shook hands at the space base in Eastern Prussia, Nazi Germany.



Kenneth A Arnold, USA, 1947

The Ark: The Cosmic Global Flood, page 25

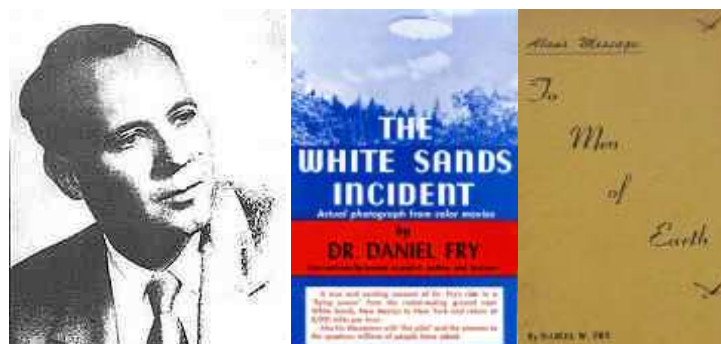
He named the object *Flying Saucer*.



George Adamski, USA, 1952

The Ark: The Cosmic Global Flood, pp 25 - 29

His messages concern extra-terrestrials in our solar system.



Daniel Fry, USA, 1954

The Ark: The Cosmic Global Flood, pp 29 - 32

Messages from the alien Alan.



Rolf Telano, USA, 1954

The Ark: The Cosmic Global Flood, pp 37 - 44

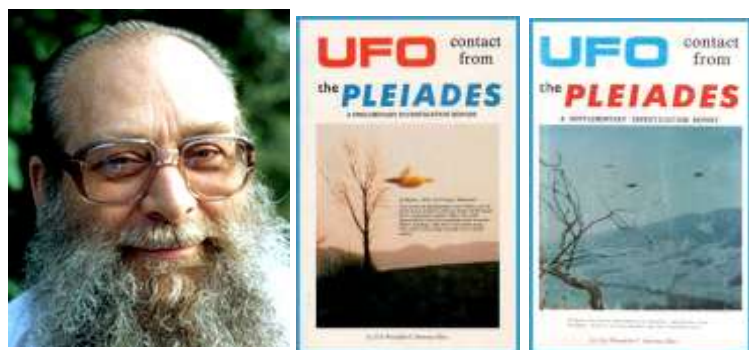
Message from planet Venus,
Extra-terrestrial character Borealis



Truman Bethurum, USA, 1957

The Ark: The Cosmic Global Flood, pp 32 - 37

Message from planet Clarion/Vulcanus
Extra-terrestrial character Aura Rhanes



Eduard Albert Meier, Switzerland

a.k.a. Billy Meier

The Ark: The Cosmic Global Flood, pp 45 - 58

Conquering Space III, final, pp 67 - 69

Conquering Space III, final, pp 143 - 144

Message from the Pleiades



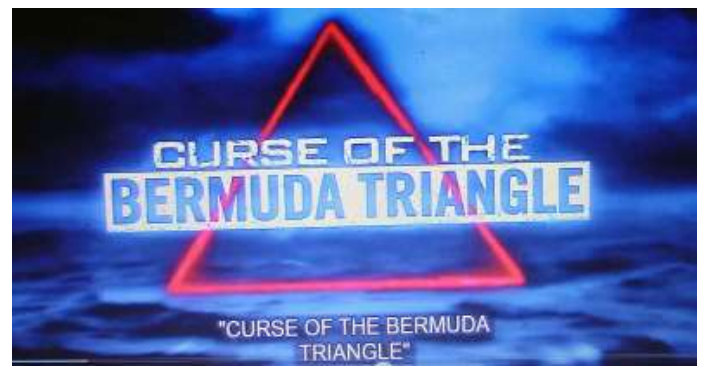
Erich von Däniken, Schweiz

Books from the 1970s

In retrospect, we can see that **Erich von Däniken's** books from the 1970s about Gods who come from space are correct, e.g. *Aussaat und Kosmos*, *Meine Welt in Bildern*.

Spuren und Pläne ausserirdischer Intelligenzen,
Erinnerungen an die Zukunft *Ungelöste Rätsel der Vergangenheit*, *Zurück zu den Sternen*. *Argumente für das Unmögliche*.

What do these messages have in common? Warnings about nuclear bombs, global natural catastrophes, floods, i.e. the road to ruin. Note that nobody mentions CO₂ emissions and global warming. Today we often hear that that the world is crazy. In a world like that CO₂ emissions are created and warms our globe. There is no scientific evidence that only greenhouse gases warm the Earth. How many individuals panicked and suffered from attacks of anxiety when they heard this fake message? Many, but nobody has bothered to count them.



UFO/USO and extra-terrestrials exist, that is a fact. **Prehistoric astronaut theorists** are right when they state that extra-terrestrials visited the Earth thousands of years ago. We can ask ourselves. What is terrestrial? Religion is not, Gods are not, neither are technology and history, even the extra-terrestrial versions. Different human races are extra-terrestrial. We often say that 'Knowledge Brings Light. These teams bring light to the history of the Earth.

Mars – Moon – Mars

Start and Finish

Start

2020-2021

Finish



CNSA
National Space Administration,
China

Chang'e 5, probe

Launch November 23, 2020

Landing December 1, 2020

Landing site: Oceanus Procellarum

Return launch: December 3, 2020

Touchdown December 16

Mongolia/China



MBRSC
Mohammed bin Rashid
Space Centre

United Arab Emirates

UAE

al Alami, Marssond

Arrived on February 18, 2021



CNSA
National Space Administration,
China

Tianwen1, Probe

Launch July 23, 2020



CNSA
National Space Administration,
China

Tianwen1, Probe

Arrived on February 18, 2021

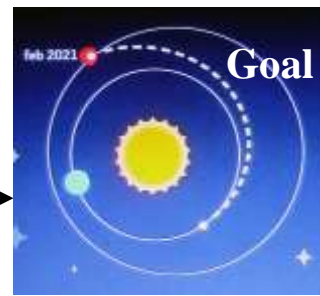


NASA, USA
Perseverance, Probe
Launch July 30, 2020



NASA, USA
Perseverance, Probe
Arrived on February 18, 2021

UAE



MBRSC
United Arab Emirates
UAE
al Alam, Probe
Launch July 20, 2020



CNSA
National Space
Administration,
China
Tianwen1, Probe
Start July 23, 2020

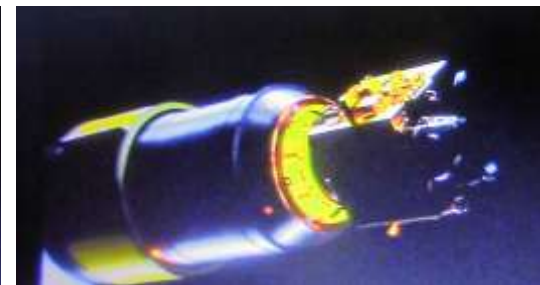
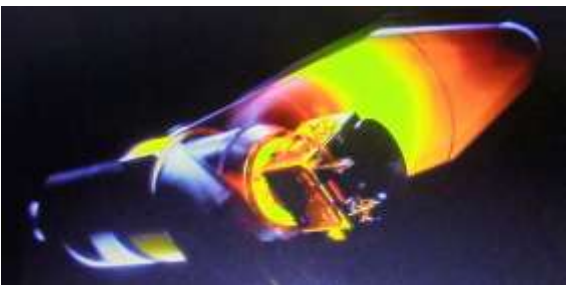


NASA, USA
Perseverance, Probe
Start July 30, 2020



Planet of the Year, Mars

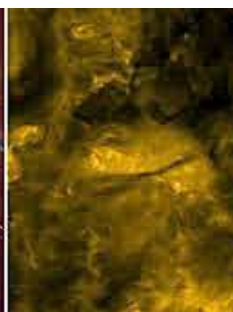
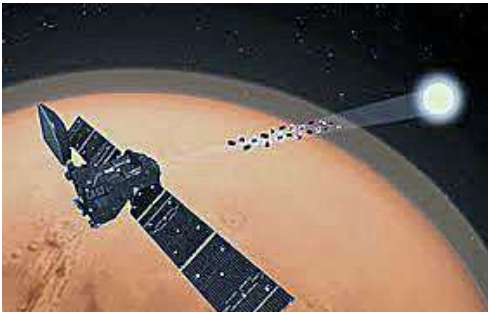




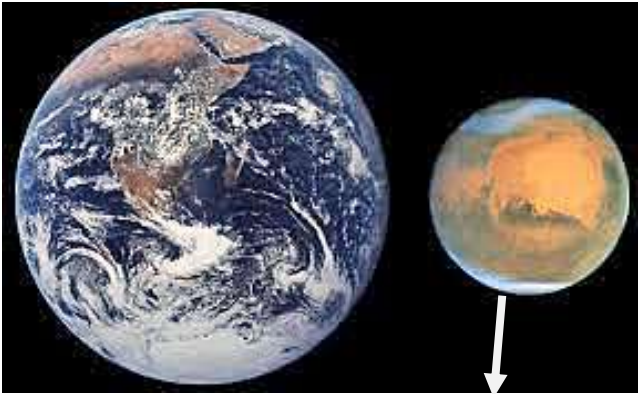
The Mars probe al-Alam/Hope was launched via JAXA from Tanegashima Space Center, Pas 2, Japan, on July 20, 2020. It was a perfect launch, as demonstrated by the pictures. TNSC is one of Japan's space centres, located at Tanegashima. It was founded in 1969.

The United Arab Emirates was the first country to launch a Mars probe on July 20, 2020. For the majority of countries this was probably a surprise. It turns out that knowledge about space is very important. The United Arab Emirates represent the whole Arabian world and possess the knowledge.





The Mars probe al-Alam weighs 1,350 kilos and is as big as a large car. Al-Alam arrived at the red planet on February 18, 2021. The craft did not land on the planet but remains in orbit for a Martian year, 687 Earth days. It surveys the planet from its orbit in order to better understand its atmosphere.



Atmosphere Make-up
78.08 % nitrogen (N₂)
20.95 % oxygen (O₂)
0.93 % argon
0,038 % carbon dioxide

| | |
|-----------------------|-------------------------|
| Carbon dioxide | 95.32 % |
| Nitrogen | 2.7 % |
| Argon | 1.6 % |
| Oxygen | 1.3 % |
| Carbon monoxide | 0.7 % |
| Steam | 0.3 % |
| Nitric oxide | 0.13 % |
| Neon | 2.5 · 10 ⁻⁶ |
| Crypton | 300 · 10 ⁻⁹ |
| Formaldehyde | 130 · 10 ⁻⁹ |
| Xenon | 80 · 10 ⁻⁹ |
| Ozone | 30 · 10 ⁻⁹ |
| Methane | 10.5 · 10 ⁻⁹ |

The craft's main assignment is to study the Martian atmosphere. This is a very good idea. The long-time goal is a Martian town in about 100 years.

We can see that the difference between the Earth's and Mars' atmospheres is substantial. One example is nitrogen which constitutes 78 % of the Earth's atmosphere, but only 2.7 % of the Martian atmosphere. The oxygen content here is 21 %, at Mars it is 1,3 %. We can finally compare 0.038 % carbon dioxide in our atmosphere to the Martian equivalent of 95.32 %, an enormous difference.

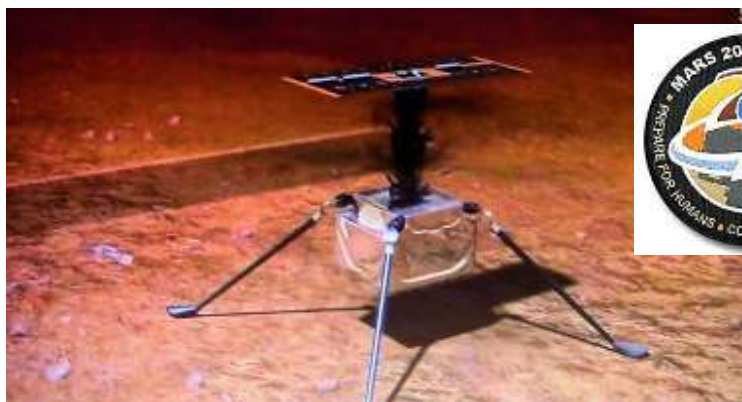
Climate scientists claim that global warming is caused by emissions of CO₂ from fossil industry and traffic around our globe, even though CO₂ is heavier than air. They do not include volcanic eruptions and wildfires which are natural phenomena and cause more CO₂ emissions than, for example, industry. They do not mention natural causes.

It is a very good idea to study how more than 95 % of CO₂ in the Martian atmosphere affect global warming there. That will be an exciting atmospheric and climate research.

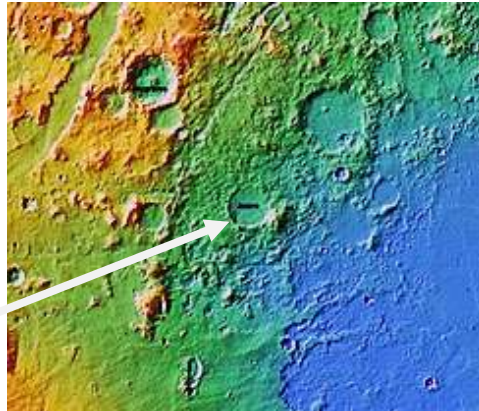
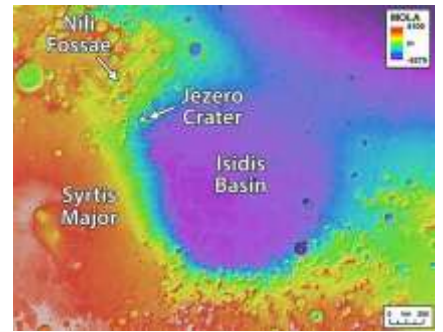
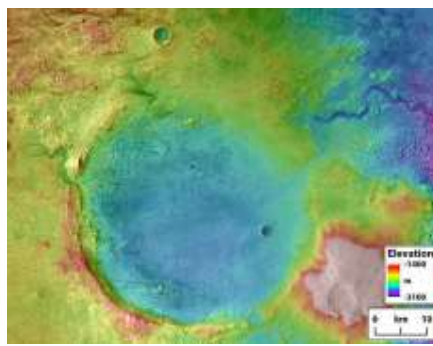
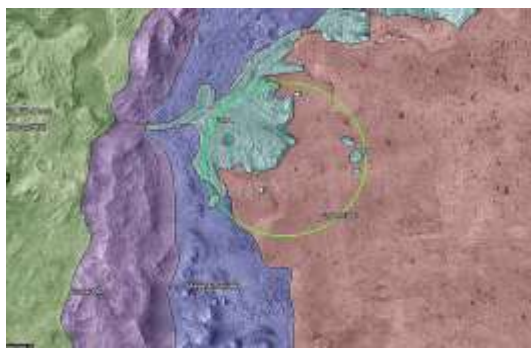
Here on the Earth, CO₂ is heavier than air and stays on the surface of the Earth.



NASA's Martian program includes the rover **Perseverance**, nick-named Percy. Its symbol is a serpent, the serpent which holds out against the Earth. Perseverance is a development of the Martian rover Curiosity from 2014 and is a completion of the Mars helicopter Ingenuity. Perseverance will touch down and investigate the Jezero crater on Mars.



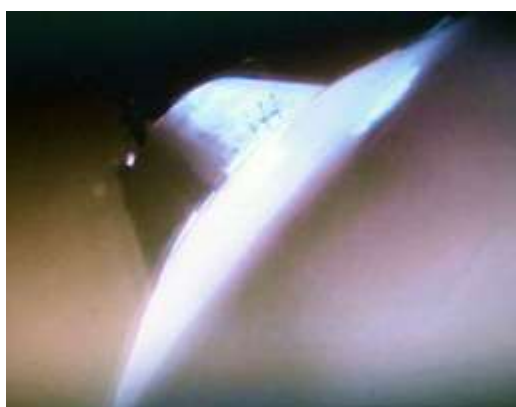
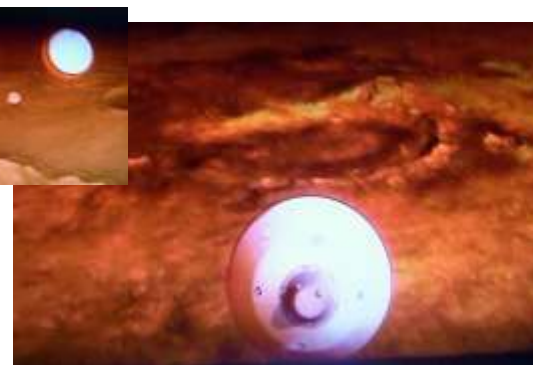
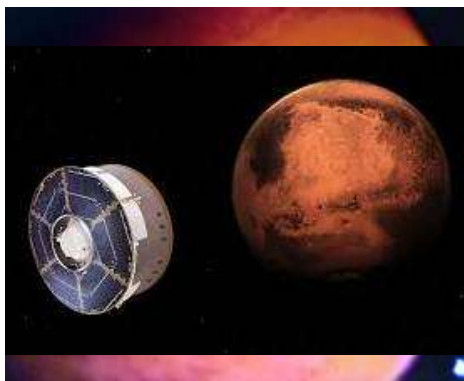
Testing the rover and the helicopter.



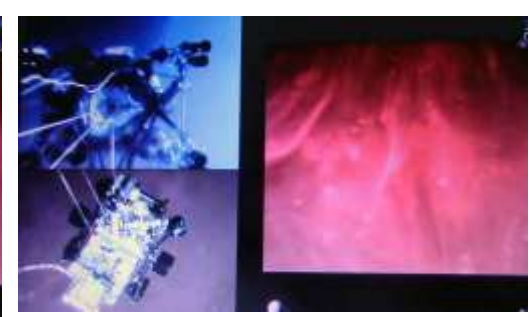
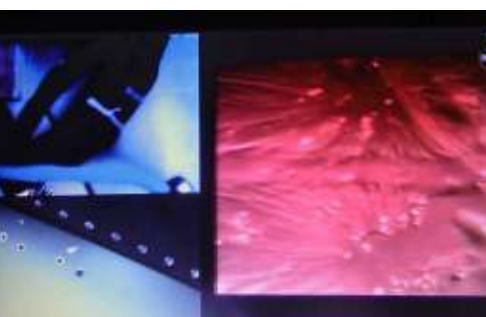
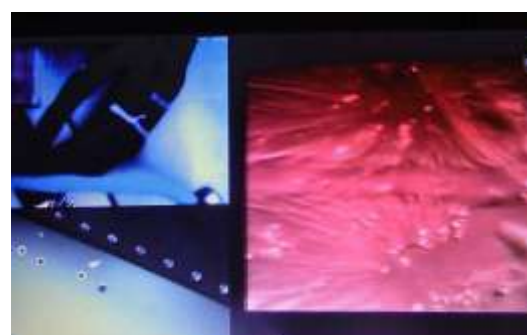
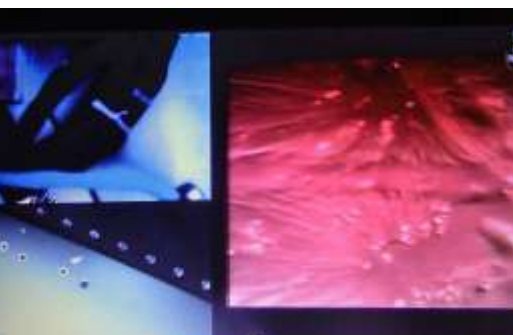
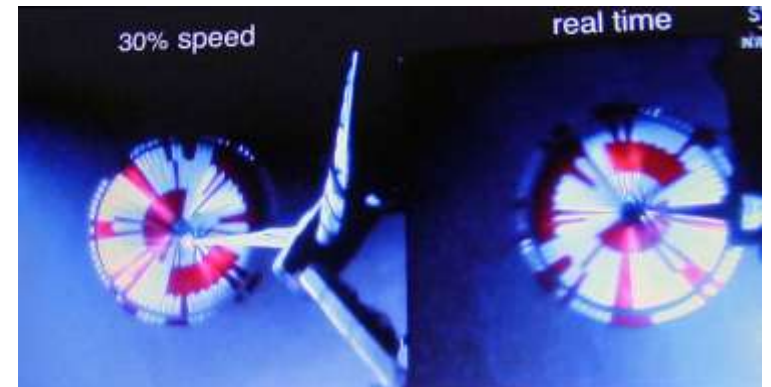
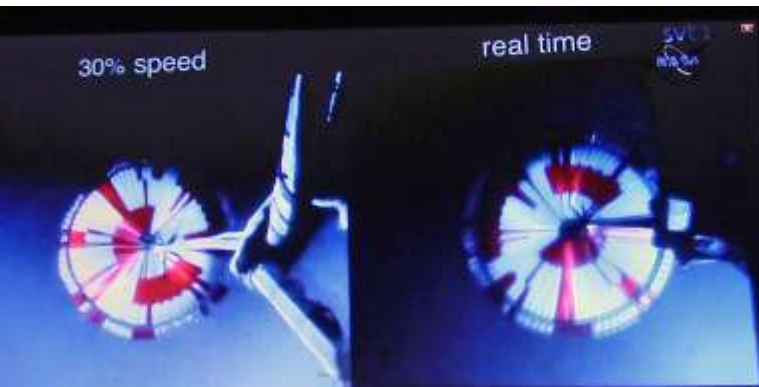
The **Jezero crater** on Mars, where the NASA Mars craft will land. Its diameter is 49 kilometres. NASA is well prepared for this new Martian project.

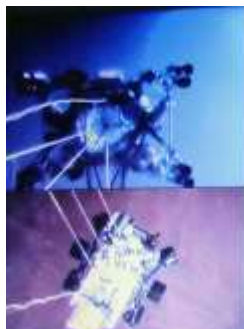
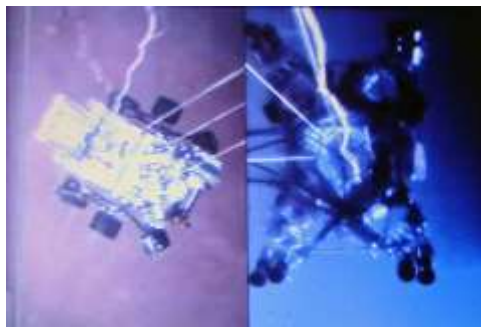


Martian probe Perseverance was launched on July 2020 from Kennedy Space Center, SLC-41, launch pad 14, in Florida and arrived at planet Mars on February 18, 2021. It landed at the Jezero crater.

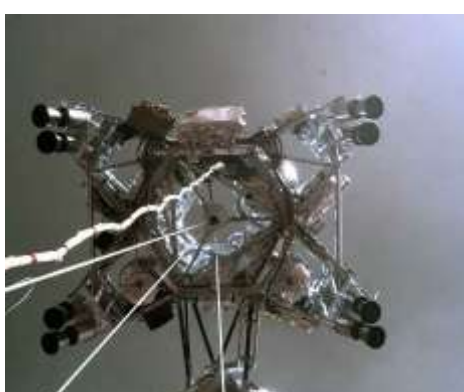


After a long journey through space, Perseverance touched down on Mars on February 18, 2021.





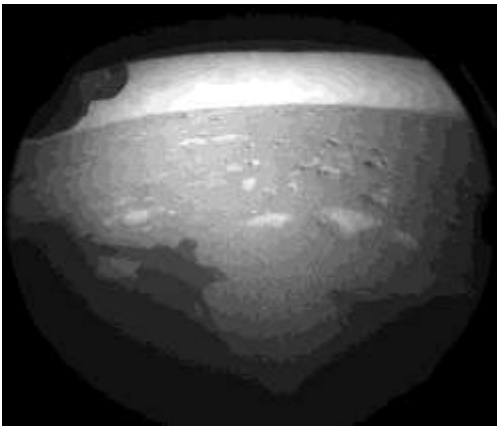
Perseverance prepares to land on the surface of Mars. The parachute worked as planned, the touch-down was near...



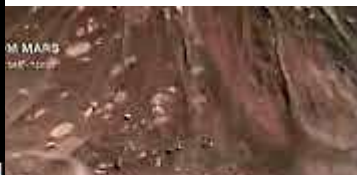
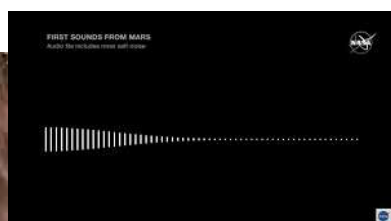
These pictures depict how the landing procedure was carried out...



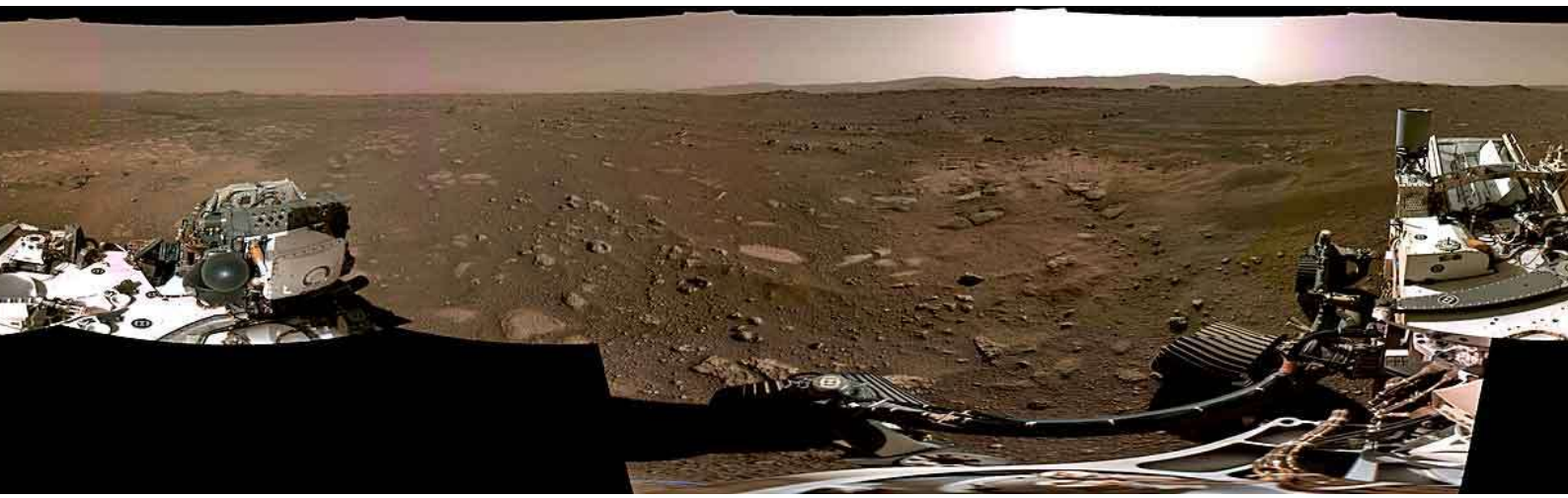
According to these pictures, the touch-down procedure was smooth.



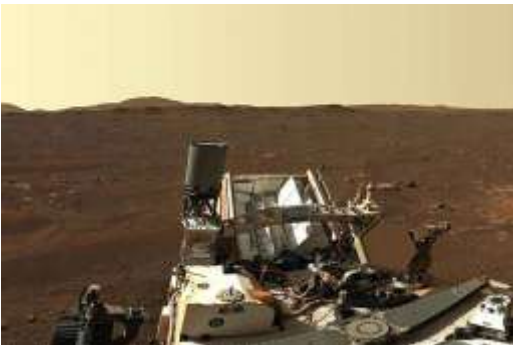
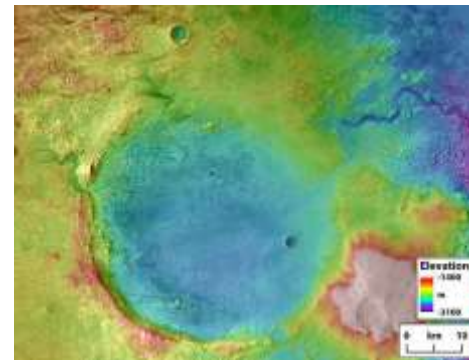
Rover Perseverance landed at crater Jezero. Excellent view from the rover.



Perseverance has brought a microphone to be able to record sounds from the surface of the planet and send it back to Earth.

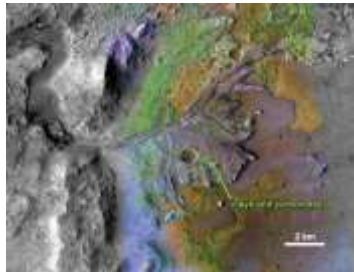
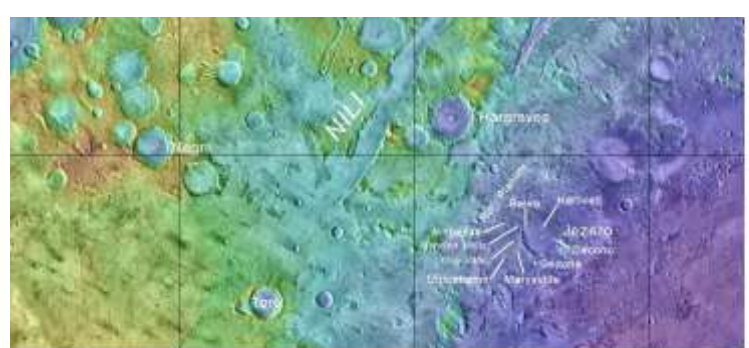
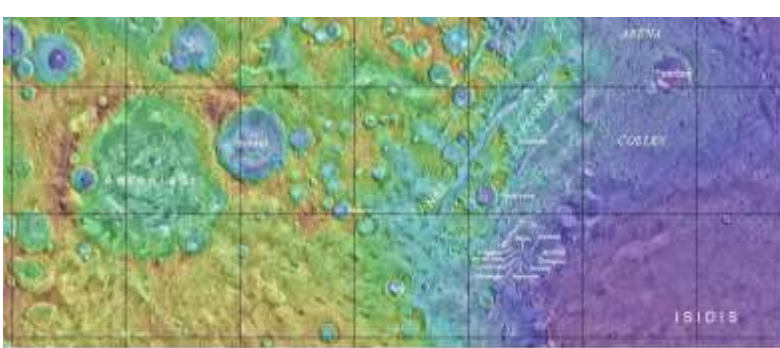


The red planet Mars and the landscape, seen from Perseverance.



The first pictures from Perseverance at Jezero.

Jezero is an impact crater and a paleo lake on Mars. Jezero is on the fringes of Isidis Planitia and close to Nili Fossae and Syrtis Major. It has a diameter of around 50 kilometres and a volume approaching 465 km^3 . The crater was formed around 3.9 billion years ago and during the first 100 million years contained a lake. Jezero has been chosen as the landing site for the NASA rover Perseverance, part of the Mars 2020 project.



Jezero crater. On May 19, 2021, the helicopter Ingenuity was tested and demonstrated that it was capable of starting the rotor blades, ascending to 60 – 70 metres, hovering, landing and stopping the rotor blades. NASA has so far successfully carried out its Mars program. Perseverance and Ingenuity continue their assignments at the Jezero crater.

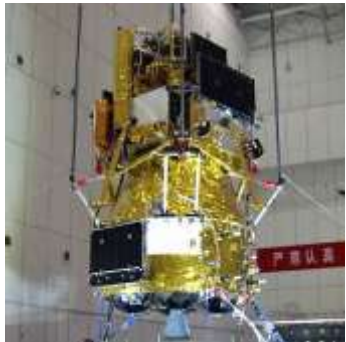
From the red planet Mars to our nearest neighbour the Moon. Lunar probe Chang'e 5



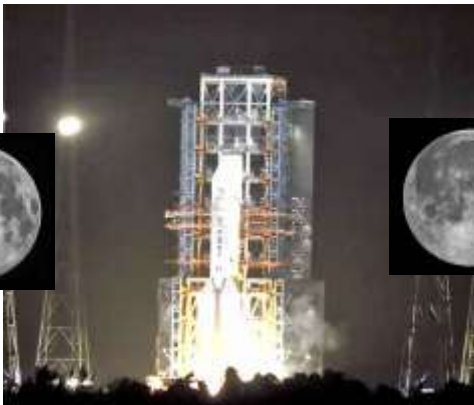
Chang'e-5

LUNAR SURFACE SAMPLING AND SAMPLE RETURN

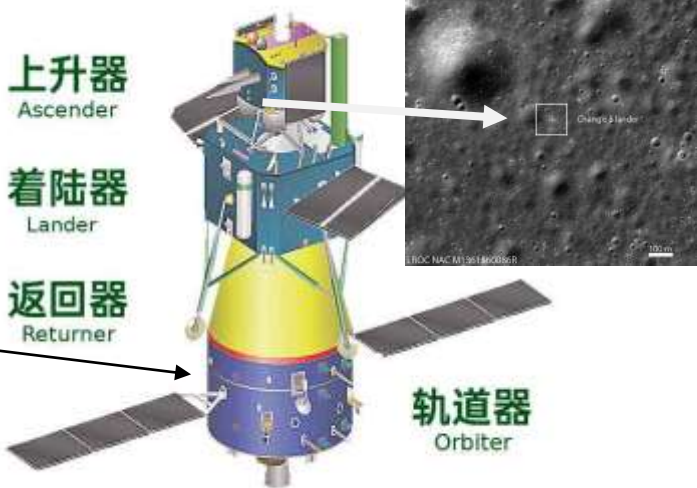
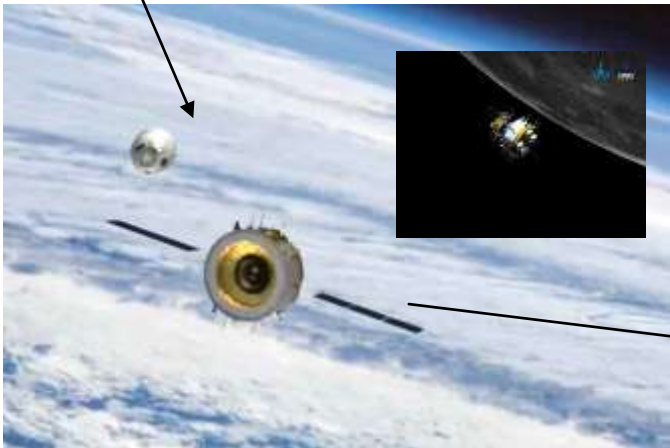
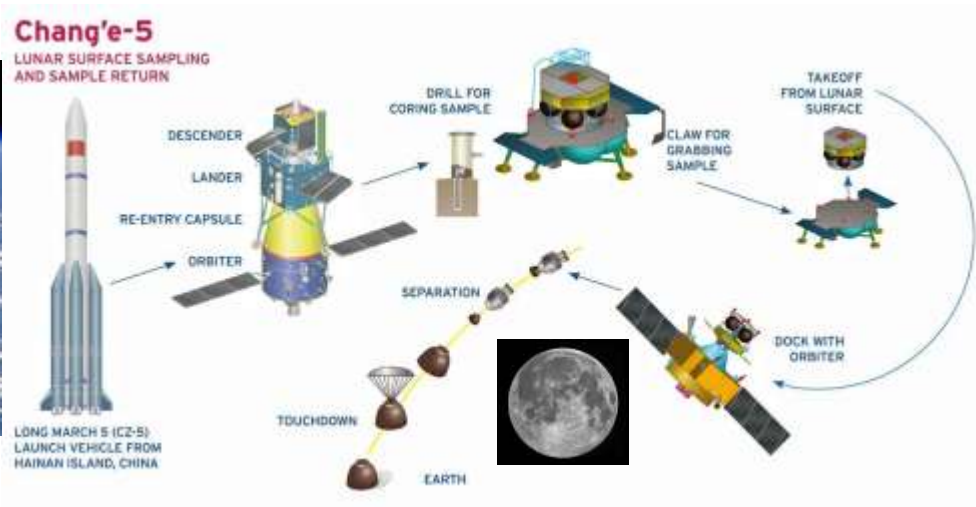




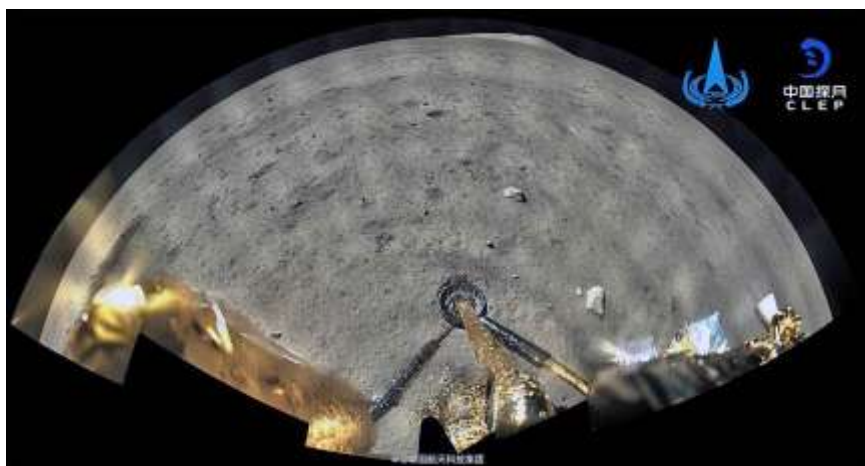
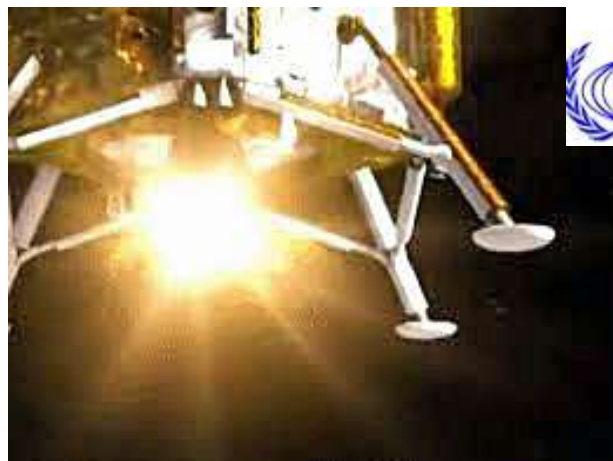
Lunar craft **Chang'e 5** before launch from Wenchang Satellite Launch Center. This is what it looked like before the launch.



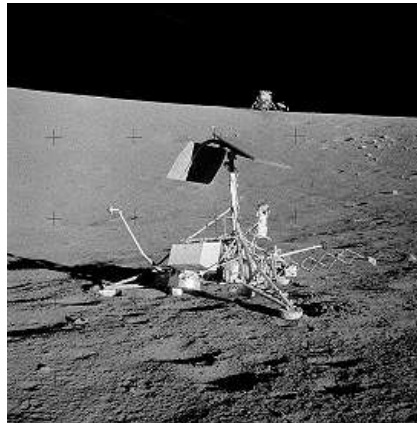
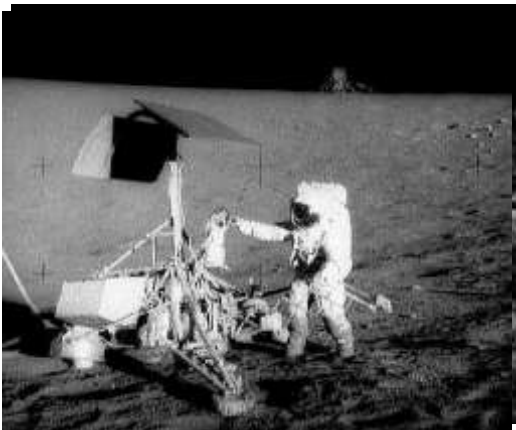
Wenchang Satellite Launch Center. On November 23 2020, at 8.30 p.m. UTC, lunar craft **Chang'e 5** was launched. It was supposed to land at Oceanus Procellarum, the Ocean of Storms.



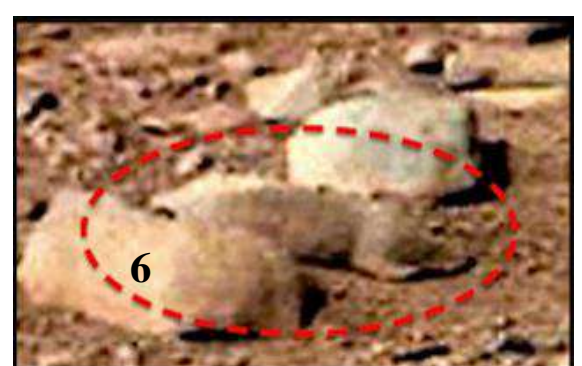
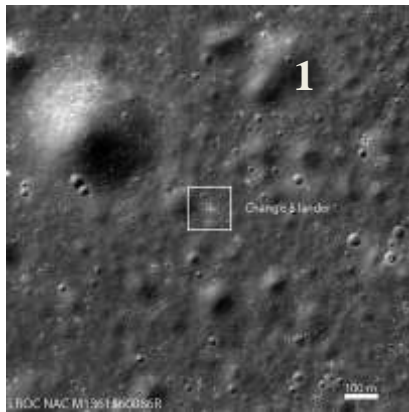
The lunar program for spacecraft **Chang'e 5**. The pictures tell us that the craft had two main parts: a so-called orbiter which orbited the Moon while the other part touched down at the mountain Mons Rümker, at the Ocean of Storms. The mountain has a diameter of 70 kilometres, its height is 1.1 kilometres. It has been named after the German astronomer Karl Rümker.



On November 28 **Chang'e 5** arrived at the Moon and on December 3, 2020, it landed at Mons Rümker, the Ocean of Storms.



Surveyor 3, NASA, landed on April 17, 1967, at the Ocean of Storms. Conrad and Bean visited the lunar probe on November 29 1969 and studied it. In the background we can see the Apollo 12 lunar module Intrepid, which now has a companion, **Chang'e 5**.



Mons Rümker is a mountain on the north-western part of the Moon and faces the Earth. It has been named after the German astronomer Karl Rümker.

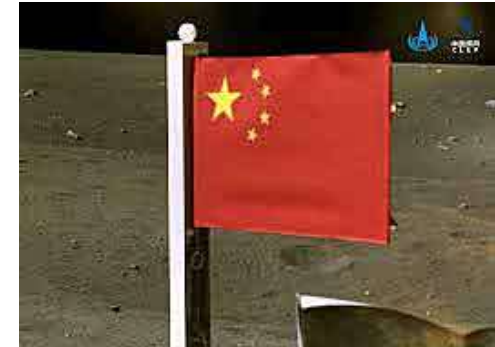
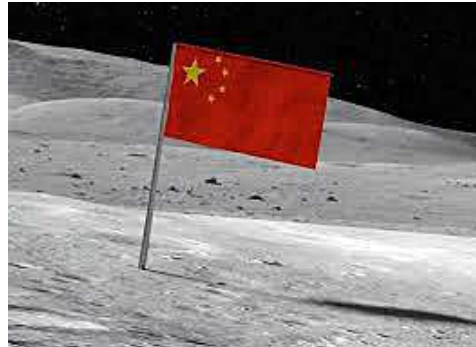
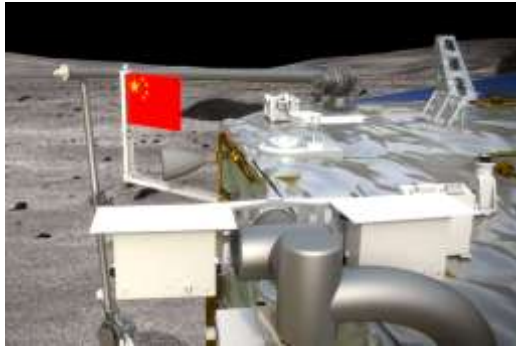
It is completely surrounded by lunar oceans with the giant Oceanus Procellarum/Ocean of Storms in the south and the tiny Sinus Roris in the north. It is a peculiar mountain area with several peaks. Its diameter at the foot is around 70 kilometres, and it reaches a height of 1.1 kilometres in the south. It has a steep edge which keeps it apart from the surrounding lunar oceans.

The black and white pictures depict **Mons Rümker**, the **Chang'e 5** landing site. In pict. #5 we can see a four-legged animal running past the module. Pict. #6 depicts an animal between two rocks. This photo was taken by the Apollo astronauts, probably by Conrad or Bean at the Ocean of Storms. This might indicate that there is life on the Moon, and that animals can survive and live in its atmosphere.

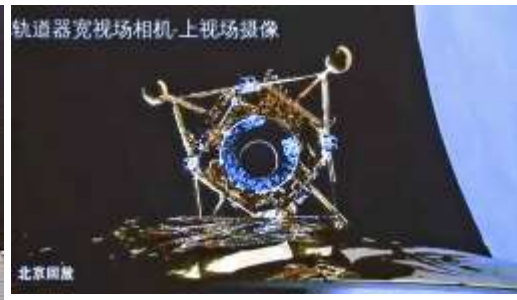




The lunar module collects samples from the surface. The samples will be investigated and tested regarding, for example the Moon's history and creation.



Lunar craft **Chang'e 5's** module completes its assignment and finally places the Chinese flag at the landing site Mons Rümker.



After the end of the assignment its upper part started on December 3, 2020, from **Chang'e 5** and took off from Mons Rümker.



After a successful start the upper part claimed its position around the Moon and carried out a successful docking with **Chang'e 5**, as shown by the pictures.



After the successful docking **Chang'e 5** left the Moon and returned to Earth.

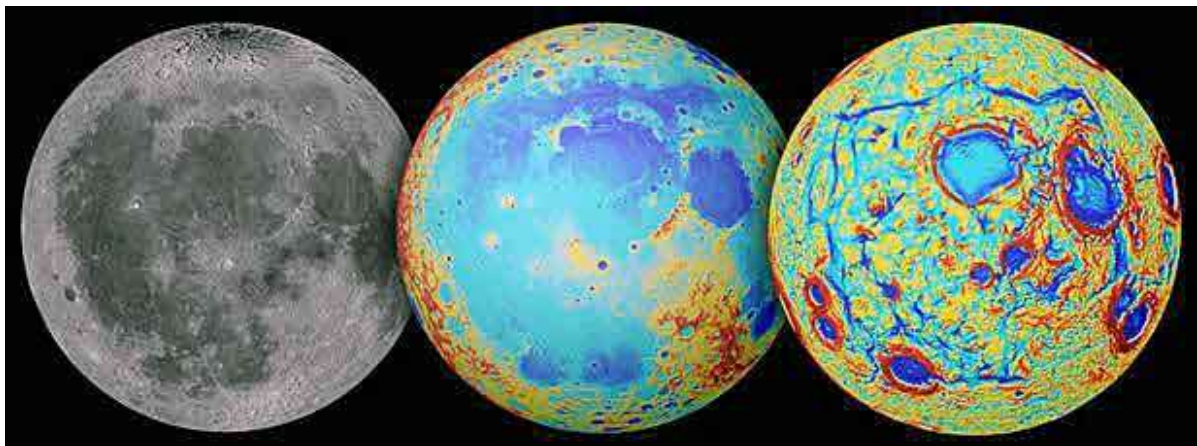




a



On December 16, 2020, **Chang'e 5** landed in Inner Mongolia. The landing was successful, and the craft was taken care of. China carried out this lunar program very carefully according to detailed plans. In **2014** China sent Chang'e 5-T1 to the Moon in order to study and map future lunar landings for **Chang'e 4** and **Chang'e 5**. More info at **Industry Conquering Space I**, pp 160 - 162.

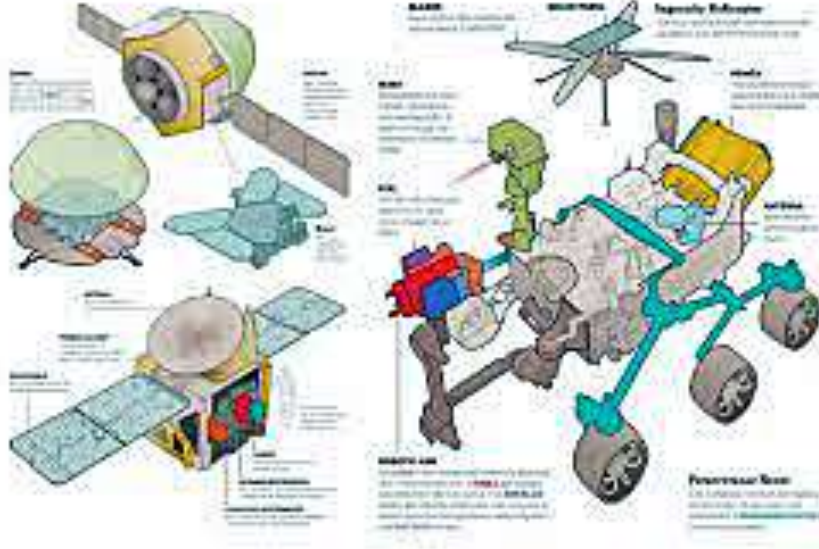


The Earth, as seen from **Mons Rümker, the Ocean of Storms, on the Moon. Chang'e 5, 2020** in December
. Chang'e 5 was a thought-out, successful lunar program

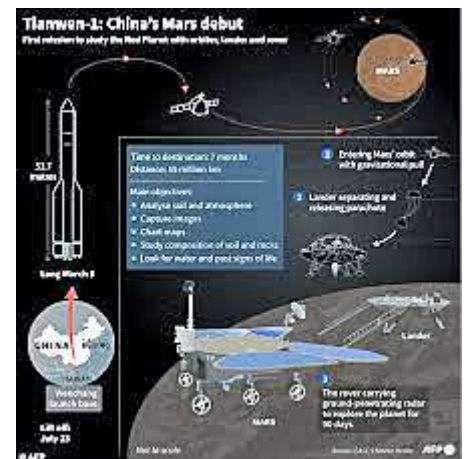
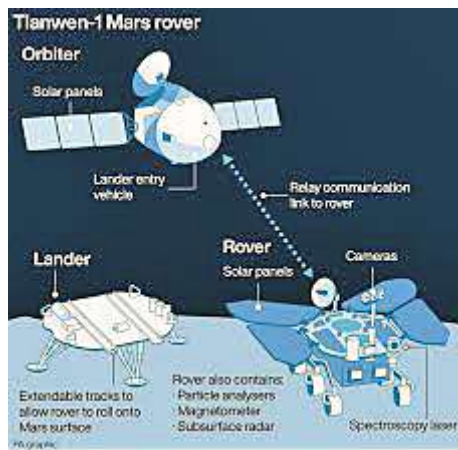
Back to the red planet Mars, Mars lunar craft **Tianwen-1**



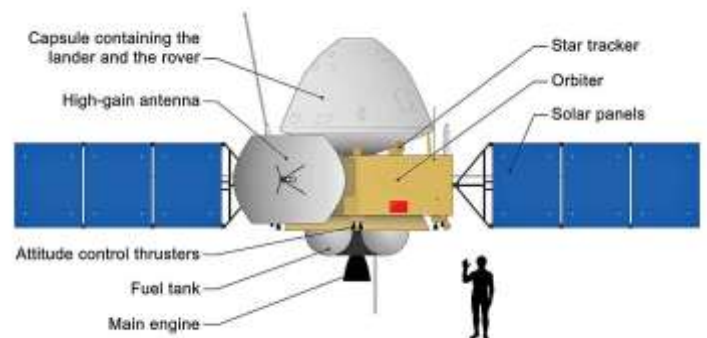
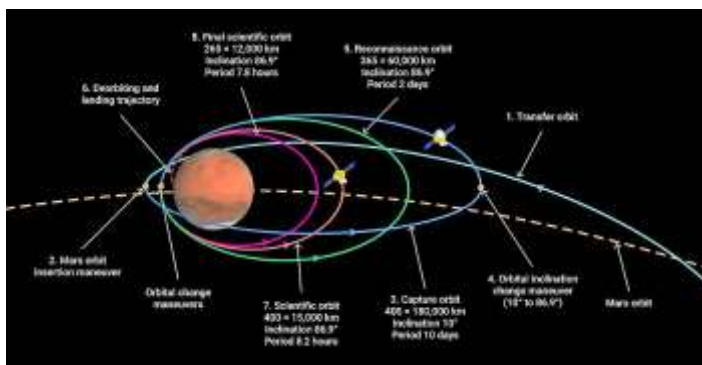
中国行星探测
Mars



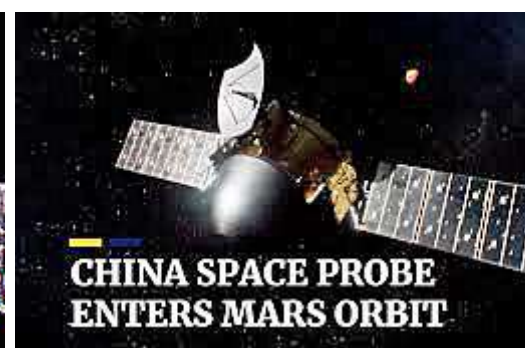
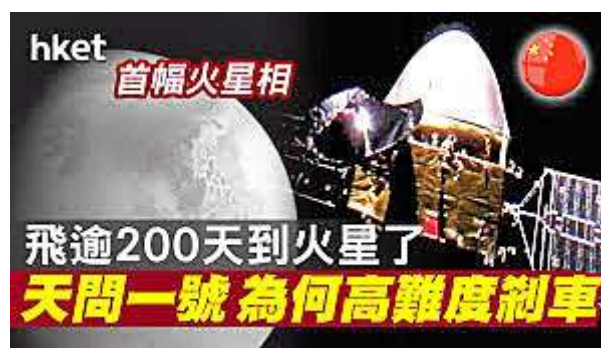
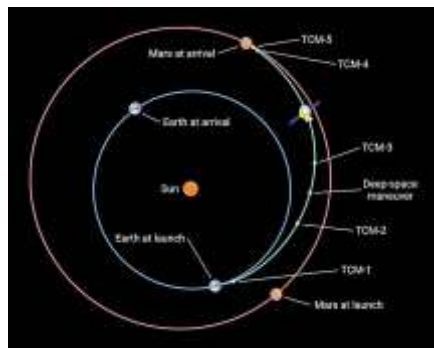
中国行星探测
Mars



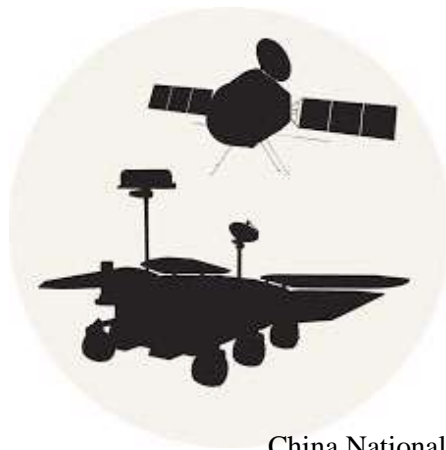
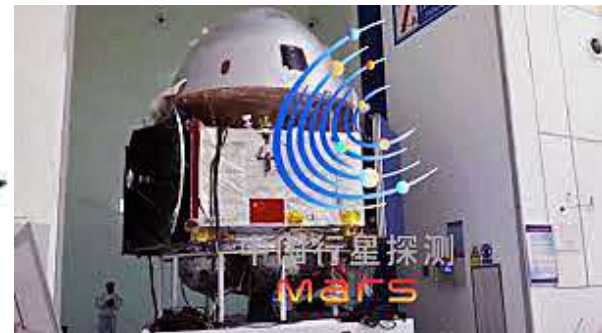
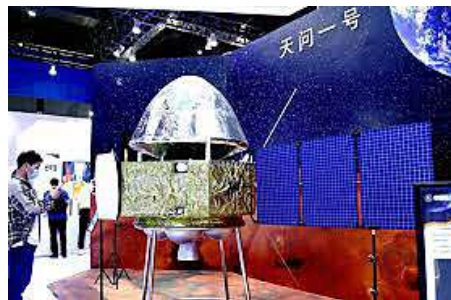
中国行星探测
Mars



The next important space program for China National Space Administrations (CNSA) is to send the spacecraft to Mars and make it land there at **Utopia Planitia**, a large plain on the north hemisphere. Above we can see the program of the Mars spacecraft which will be carried out by CNSA after careful planning.



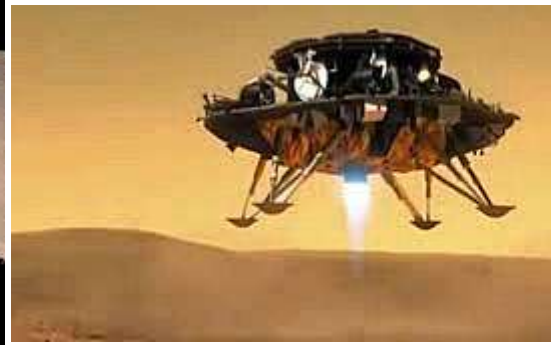
China National Space Administration (CNSA) to planet Mars



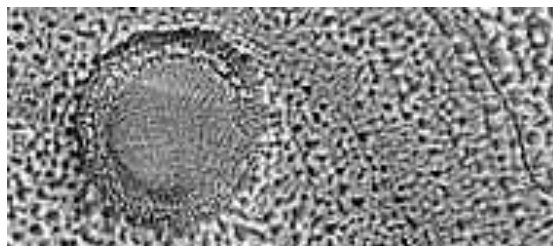
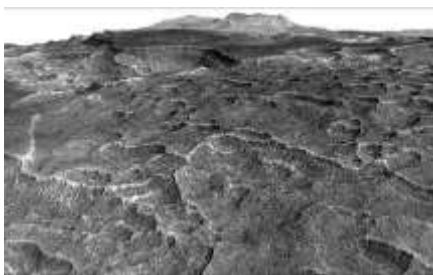
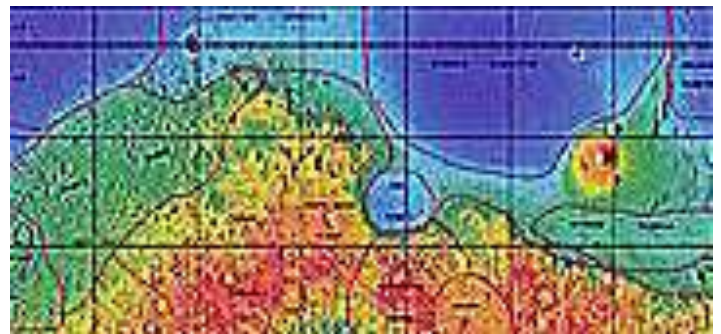
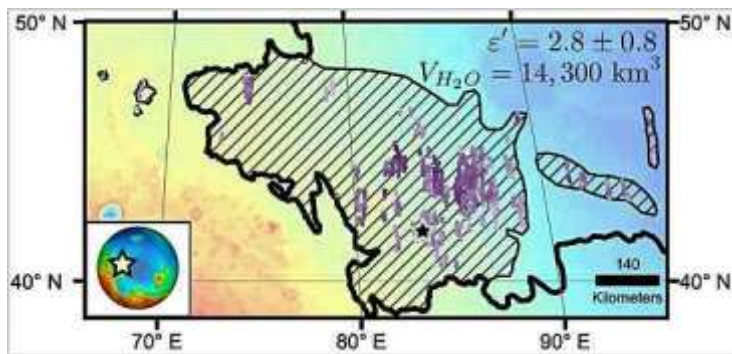
China National Space Administration's orbiter which will orbit Mars.

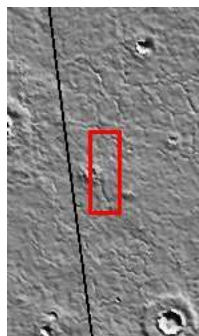


CNSA will carry out their careful plans concerning landing at Utopia Planitia, including the movements of the rover.



CNSA will carry out their careful plans concerning landing at Utopia Planitia (diameter: 3.300 kilometres).





Utopia Planitia. Utopia Planitia, a vast plain at the northern hemisphere. Scientists believe that this basin is a result of substantial power. At the right-hand side of the picture is a partially visible crater with a well-preserved ejecta blanket. Its morphology says that the crater is young compared to the surrounding material and has not undergone substantial sedimentation or erosion. Around the crater are polygonal trays in the smooth surface material. This polygonal pattern is relatively common on the northern plains and are mostly situated at Acidalia Planitia, Elysium Planitia and Utopia Planitia. Scientists discuss the origins of these patterns. The most advanced theories are that they have either been formed when volcanic material cools down and shrinks or are formed when sediments shrink as a result of compression.

When Sir Thomas More wrote his book about a fictional, optimal place run by common sense, he coined the word 'utopia' from a Greek word meaning '**nowhere**'. For the first time Utopia Planitia became '**somewhere**', when the first visitor, moon lander Viking 2, touched down to analyse the area. Researchers of today use their own conclusions and their own logic when they try to learn more about how this northern plain was geologically developed. Now it is up to Tianwen-1 to continue the research and develop the results. Viking-2 receives one more visitor and becomes **Tianwen-1's** neighbour. **Viking-2** landed at **Utopia Planitia** on September 3, 1976, and is looking forward to its future neighbour. See pictures above.



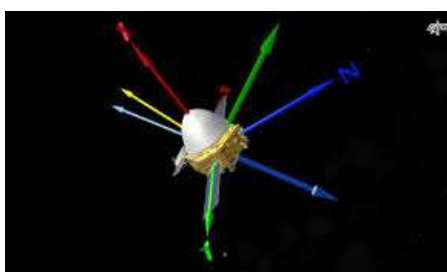
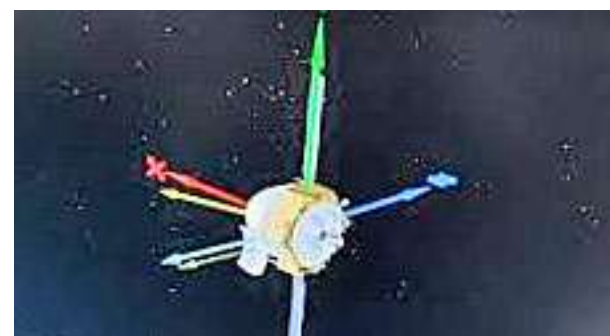
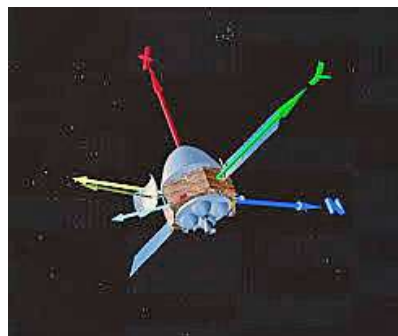
On 23 July 2020 **Tianwen-1** was launched from Wenchang Satellite Launch Center in China at 04:41:00 UTC. A successful launch.



After the launch Mars Craft **Tianwen-1** was put in orbit around the Earth.



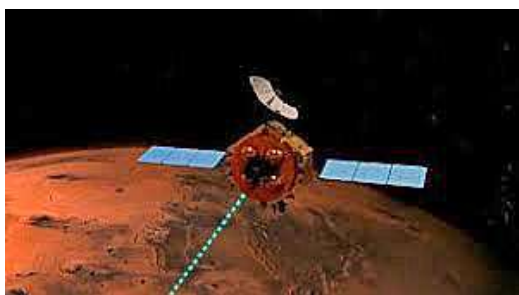
Mars craft **Tianwen-1**, its plan and program for touch-down at **Utopia Planitia** in 2021



Tianwen-1 on its way to the red planet Mars.



On March 18, 2021, **Tianwen-1** arrived at its final destination. Mars. The pictures above, sent to ground control from Mars, show the arrival of the craft.



From 18 March, **Tianwen-1** orbits Mars and the landing module is waiting for orders to land at **Utopia Planitia**. This will happen in the month of May.



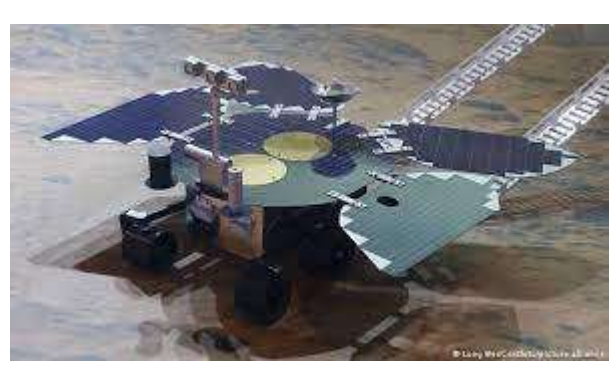
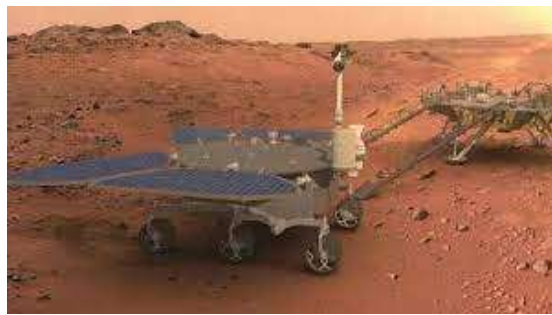


On May 15, 2021, **Tianwen-1** landed at **Utopia Planitia** on planet **Mars**. **Tianwen-1** carried out a perfect landing, confirmed by the pictures above.



Then the Mars rover Zhurong left Tianwen -1.





Mars rover Zhurong rolls away from Tianwen -1 at Utopia Planitia on Mars.



After the separation Zhurong started its assignment: investigating the surroundings. This is an ongoing procedure.

Successful landings on Mars



Source: NASA

BBC

We now have three Mars probes: two have landed on Mars and one is in orbit. The study of the planet's atmosphere, climate and its magnetic field may be the most important assignments for all three. It is also of interest to study the sandstorms and how Nemesis' magnetic field affects Mars, whose field is weak. The question is how much the general public will be allowed to know about this research.

Here, climate scientists claim that CO₂ emissions cause global warming. CO₂, which is heavier than air and constitutes 0.038 % of the Earth's atmosphere. This is not much compared to CO₂ in the Martian atmosphere, 95 % CO₂. According to our scientists, there would be global warming, caused by CO₂ on Mars. More info at **Industry, Conquering Space III, final**, page 45.

2021 – The Year of Space:

Space flights around the Earth continues, as usual by Russia, the US, and China.

Roscosmos/NASA; Soyuz MS-18, Soyuz MS-19 and Soyuz MS-20

SpaceX/NASA; SpaceX Crew-2, Inspiration4 Crew Dragon, SpaceX Crew-3

CSNA: Shenzhou-12 and Shenzhou-13.

Space tourism is also approaching:

USA: **Virgin Galactic Unity 22 and Blue Origin NS-16, NS-17, NS-18.**

Soyuz MS-18, Soyuz MS-19, Soyuz MS-20, 2021

Baikonur Cosmodrome



Soyuz MS-18, 09-04-2021
Oleg Novitsky, CDR, RSA
Pyotr Dubrov, RSA
Pyotr Dubrov, RSA

Launch Baikonur **LC-31**,
Docking 09-04-2021
 Docking ISS, **Exp.65**
 Landing 17-10-2021



ISS + UFO-Control



Soyuz MS-19, 05-10-2021

Anton Shkaplerov, Roscosmos, CDR, RSA

Klim Shipenko, Channel 1, RSA

Yulia Peresild, Channel 1, RSA

Launched Baikonur **LC-31**,

Docking 05-10-2021

Docking ISS, Exp.66

Landing 09 03-2022

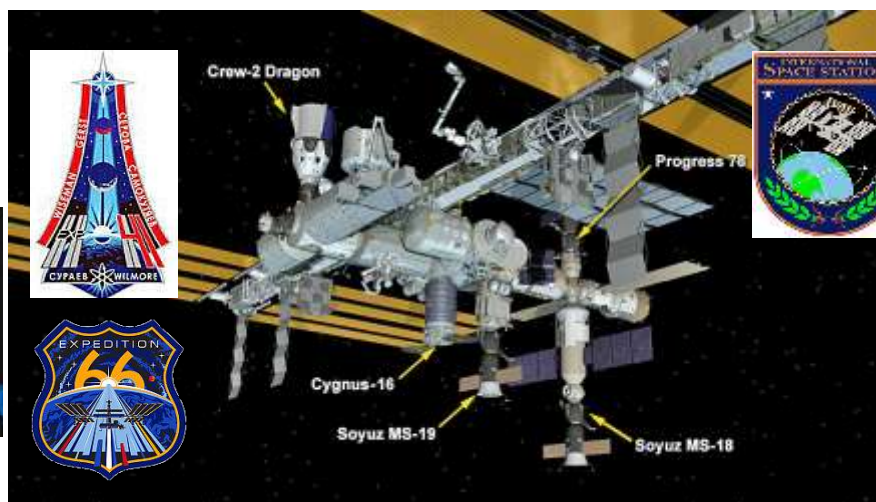
Landing 17-10- 2021

Soyuz SM-18

Oleg Novitsky, CMD, RSA

Klim Shipenko, Channel 1, RSA

Yulia Peresild, Channel 1, RSA



ISS + UFO-Control



The crew consists of a Russian commander, Russian film director Klim Shipenko and Russian actress Yulia Peresild.^[3] Shipenko and Peresild are planned to spend about twelve days on the ISS before returning to Earth aboard Soyuz MS-18.





Soyuz MS-20, 08-12-2021

Alexander Misurkin, RSA CDR.
Yusaku Maezawa, Tourist, Japan
Yozo Hirano, Tourist, Japan

Launch Baikonur **LC-31**,
Docking 08-12-2021
 Docking ISS, **Exp.66**
 Landing 20-12- 2021



Soyuz MS-20 marks the first flight of a space tourist to the International Space Station since Canadian space tourist Guy Laliberté launched onboard Soyuz TMA-16 in September 2009.^[10] British singer Sarah Brightman was originally scheduled to fly onboard Soyuz TMA-18M in 2015, although she cancelled her flight before launch. Soyuz MS-20 also marks the first of at least two completely commercially dedicated Soyuz flights flown by Roscosmos, the second being Soyuz MS-23, which is scheduled for launch in October 2022, and also ferry one Russian cosmonaut and two commercial astronauts to the ISS for six months.

SPACEX

Kennedy
Space
Center™

SpaceX Crew-2, 2021-04-23

Inspiration4 Crew Dragon, 2021- 09-16

SpaceX Crew-3, 2021- 11- 11

NASA
Florida



SpaceX Crew-2, 2021-04-23

Shane Kimbrough, NASA, Befälhavare

K. Megan McArthur, NASA, Pilot

Akihiko Hoshide, JAXA, Mission Specialist 1

Thomas Pesquet, ESA, Mission Specialist 2

Start, Kennedy Space Center, Florida Pad 39A

Dockningen den 24 april 2021

Docking med ISS, Exp.65

Landing 9 november 2021



SpaceX Crew-2, 23-04-2021

Shane Kimbrough, NASA, CDR

K. Megan McArthur, NASA, Pilot

Akihiko Hoshide, JAXA, Mission Specialist 1

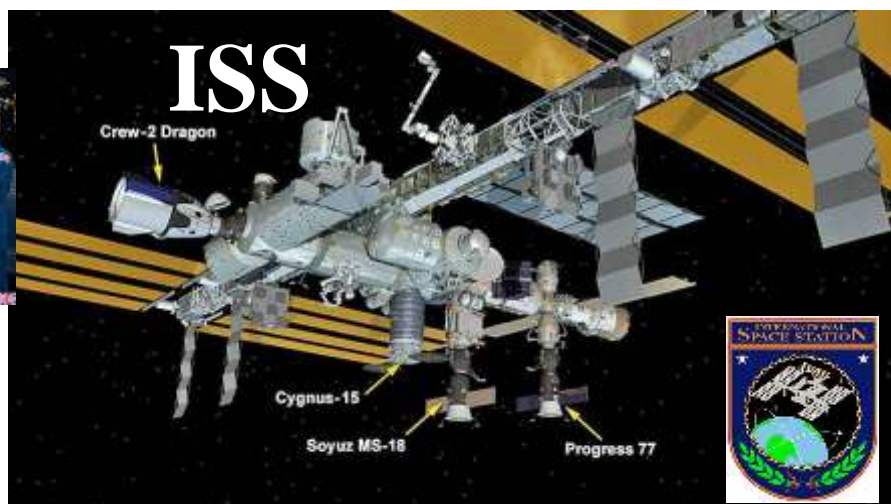
Thomas Pesquet, ESA, Mission Specialist 2

Launch, Kennedy Space Center, Florida Pad 39A

Dockningen 24-04- 2021

Docking ISS, Exp.65

Landing 09-11-2021



ISS

ISS + UFO-Control.



Inspiration4 Crew Dragon, 16-09-2021

Jared Isaacman, CDR

Sian Proctor, Plt

Hayley Arceneaux, Chief medical officer, tourist
Christopher Sembroski, Mission specialist, tourist

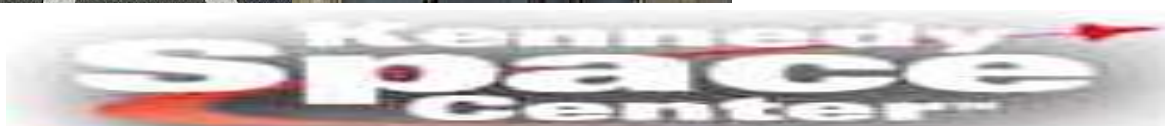
Launch. Kennedy Space Center, Florida Pad 39A

Landing. 18-09-2021

Space Tourism



SpaceX ----- Space Tourism



SpaceX Crew-3, 11-11-2021

Raja Chari, NASA, Commander

Thomas Marshburn, NASA, Pilot

Matthias Maurer, ESA, Mission specialist 1

Kayla Barron, NASA, Mission specialist 2

Launch. Kennedy Space Center, Florida Pad 39A

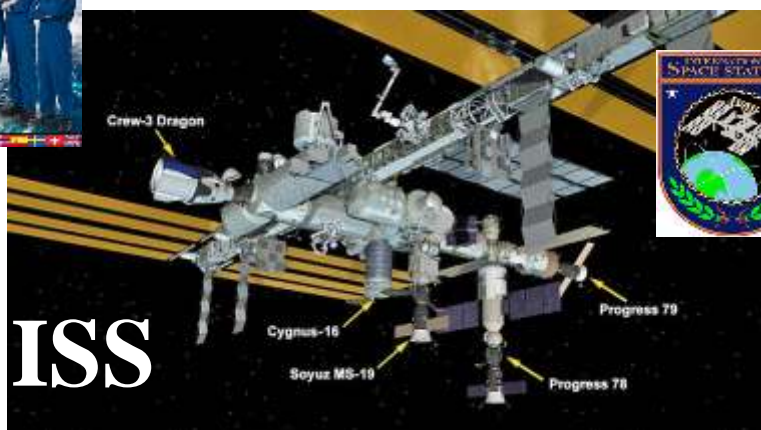
Docking 11- 2021

Docking ISS, Exp.66

Landing April 2022



ISS docking



ISS + UFO-kontroll

Shenzhou-12, Shenzhou-13, 2021

Jiuquan Satellite Launching Center, SLS-1



Shenzhou-12, 17-06-2021

Nie Haisheng, PLAAC, CDR.

Liu Boming, PLAAC, Operator-1

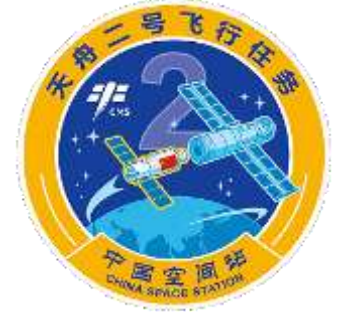
Tang Hongbo, PLAAC, Operator-2

Launch. Jiuquan Satellite Launching Center,
SLS-1

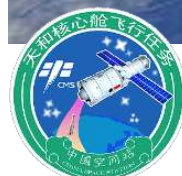
Docking. 17 -06- 2021

Docking **Tianhe/Tiangong-3**

Landing 17-09-2021



Tiangong-3



Tiangong, Space Station



Tiangong-3, Space Station



Shenzhou-13, 15-10-2021

Zhai Zhigang, PLAAC, CDR.

Wang Yaping, PLAAC, Operator

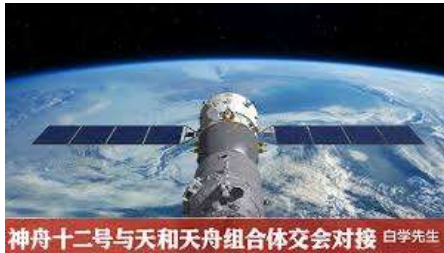
Ye Guangfu, PLAAC, System operator

Launch. Jiuquan Satellite Launching Center,
SLS-1

Docking. 15-10- 2021

Docking **Tianhe/Tiangong-3**

Landing April 2022



Tiangong-3, Space Station



Tiangong-3, Space Station



Space Tourism

Virgin Galactic Unity 22

Spaceport America Runway 34, New Mexico

Blue Origin NS-16, NS-17, NS-18

Corn Ranch, Texas



Virgin Galactic Unity 22, 11-07-2021

David Mackay, Pilot

Michael Masucci, Co-Pilot

Sirisha Bandla, Tourist

Colin Bennett, Tourist

Beth Moses, Tourist

Richard Branson, Tourist

Launch: Spaceport America Runway 34,

New Mexico, 11-07-2021



A New Space Shuttle Virgin Galactic



Virgin Galactic Unity 22 was a sub-orbital spaceflight of the SpaceShipTwo-class VSS *Unity* which launched on 11 July 2021. The crew consisted of pilots David Mackay and Michael Masucci as well as passengers Sirisha Bandla, Colin Bennett, Beth Moses, and Richard Branson.



SpaceShipTwo and Spacecraft Virgin Galactic Unity 22,.



SpaceShipTwo and Space Shuttle Virgin Galactic Unity 22



Space Shuttle Virgin Galactic in Space



On 11 July 2021, *Unity's* mother ship VMS *Eve* carried VSS *Unity* in a parasite configuration to be drop launched. At T+2:38, *Unity* reached apogee at a 282,773 ft (86,189 m) altitude (below the FAI's space boundary, the Kármán line's upper border at 100 km (62 mi) altitude, but above the United States' space boundary at 80 km (50 mi) and just above the mesopause at 86.182 km (53.551 mi). The altitude at apogee qualified the crew as FAA commercial astronauts.



Blue Origin NS-16, 20-07-2021

Mark Bezos, CDR
Jeff Bezos, tourist
Wally Funk, tourist
Oliver Daemen, tourist

Launch: Corn Ranch, Pad-1, Texas, 20 July 2021



BLUE ORIGIN





NS-16 was a sub-orbital spaceflight mission operated by Blue Origin which flew on 20 July 2021.^[1] The mission was the sixteenth flight of the company's New Shepard integrated launch vehicle and spacecraft, and its first crewed flight. It carried into space American billionaire and Blue Origin founder Jeff Bezos, his brother Mark, pilot and Mercury 13 candidate Wally Funk, and Dutch student Oliver Daemen. The flight commenced from Blue Origin's sub-orbital launch site in West Texas aboard the third flight of New Shepard booster NS4 and the spacecraft RS-1 First Step, both having previously flown on NS-14 and NS-15 earlier in the year.



Launch date 20 July 2021, 13:11 UTC. **Launch site** Corn Ranch. **Mission duration** 10 minutes 18 seconds. **Apogee** 107 kilometres (66 miles). **Landing date** 20 July 2021, 13:21 UTC. **Landing site** Corn Ranch. USA.



Virgin Galactic Unity 22

Blue Origin NS-16



BLUE ORIGIN NEW SHEPARD

NS-17 SUBORBITAL SCIENCE MISSION

August 26th 2021 - 09:35 AM EDT (13:35 UTC)

HEIGHT

15 m / 49 ft

DIAMETER

3.7 m / 12.1 ft

LAUNCHING FROM

Launch Site One, West Texas,
USA

DESTINATION ORBIT

Sub-Orbital

ROCKET

New Shepard 3

LANDING

Blue Origin's landing pad,
~3.3 km (~2 miles) from the launch site

ROCKET BY STANLEY CREATIVE

MISSION

NS-17 suborbital science flight that will test NASA lunar landing technology, fly 18 commercial payloads inside the crew capsule (11 of which are NASA-supported), and feature an art installation on the exterior of the capsule.

The New Shepard crew capsule is designed to take up to six paying passengers or a variety of scientific payloads on safe, suborbital flights.

The capsule has a full abort system, is completely automated, and does not need pilots for passenger flights.

GDBARRETT.COM

Blue Origin NS-17, Launch: Corn Ranch, Texas, 26 August 2021,





Blue Origin NS-18, 13-10-2021

Glen de Vries, CDR

Chris Boshuizen, Tourist

William Shatner, Tourist

Audrey Powers, Tourist

Launch, West Texas Suborbital Launch Site/Pad 1
Corn Ranch, USA

Landing, 13 October 2021.





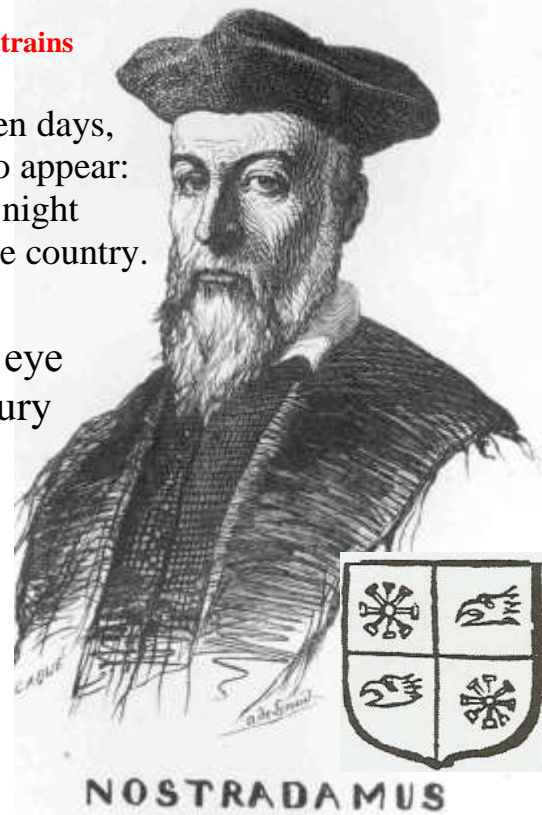
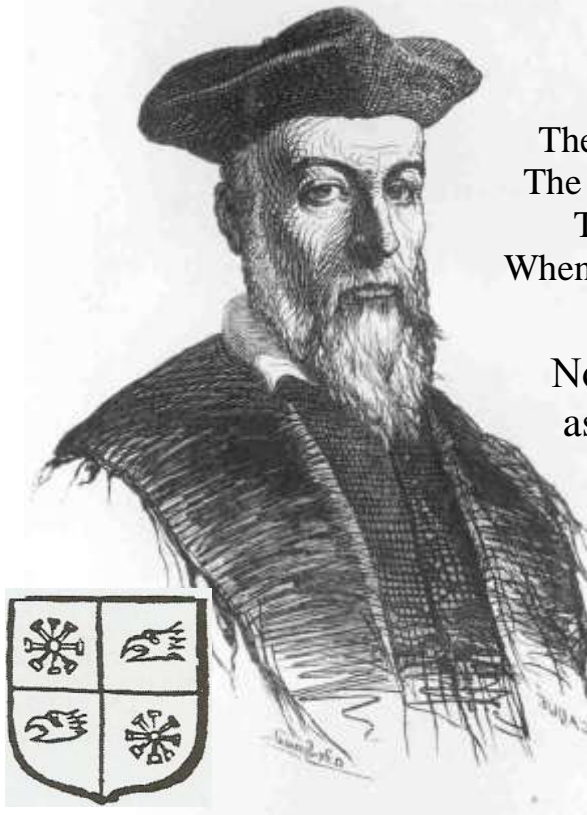
The binary star system which causes a variety of global catastrophes.

Nostradamus - Quatrains

Century 2, Quatrain 41

The great star will burn for seven days,
The cloud will cause **two suns** to appear:
The big mastiff will howl all night
When the great pontiff will change country.

Nostradamus hit the bull's eye
as early as in the 17th century



Michael de Nica



Enoch/Utnapishtim, Sumer
Lamech's only-begotten son
Chapter X, 1-29:



Daniel/Baltazar
Babylon, Babylonia,
Persia



Tomas/Tamás, Armenia, Nazareth,
Palestine
Carpenter Joseph's only-begotten
son



Kemény, Szabolcs József
Magyarország, Baja
Stockholm, Sweden Tibor
Kemény's only-begotten son

'And I, Enoch, I alone saw the likeness of all things. Nor did any human being see it, as I saw it.' See
corresponding vision at Science, *The Secret of the Black Hole*, pp 3-6.

The Fullness of Time

Daniel, 12:4 and 12:13

'.../ But you, Daniel, shut up the words, and seal the book until the time of the end; many shall run to and fro, and knowledge shall increase.'

'But you, go *your way* till the end; for you shall rest, and will arise to your inheritance at the end of the days /.../'

Finally:

5. Jesus said, 'Know what is in front of your face, and what is hidden from you will be disclosed to you. For there is nothing hidden that will not be revealed. And there is nothing buried that will not be raised.' – Jesus, too, wanted secrets to surface to give the world access to knowledge.

10. Jesus said, 'I have cast fire upon the world, and look, I'm guarding it until it blazes.' 16. Jesus said, 'Perhaps people think that I have come to cast peace upon the world. They do not know that I have come to cast conflicts upon the earth: fire, sword, war.'



Tibor E and I, Szabolcs/ Josef
Photo: Tibor Kemény 1964
Stockholm



Michelangelo, Daniel, Sistine Chapel,
Rome, 1511



Tibor E and I, Szabolcs/ Josef
Photo: Tibor Kemény 1964
Stockholm

18



Thomas, Tomas, Tamás

